



Recombinant Human E3 ubiquitin-protein ligase MYLIP (MYLIP)

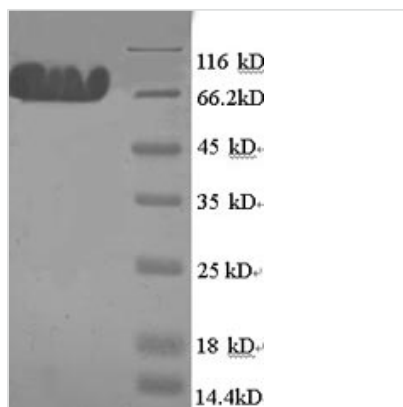
Product Code	CSB-EP855506HU
Relevance	E3 ubiquitin-protein ligase that mediates ubiquitination and subsequent proteasomal degradation of myosin regulatory light chain (MRLC), LDLR, VLDLR and LRP8. Activity depends on E2 enzymes of the UBE2D family. Proteasomal degradation of MRLC leads to inhibit neurite outgrowth in presence of NGF by counteracting the stabilization of MRLC by saposin-like protein (CNPY2/MSAP) and reducing CNPY2-stimulated neurite outgrowth. Acts as a sterol-dependent inhibitor of cellular cholesterol uptake by mediating ubiquitination and subsequent degradation of LDLR.
Abbreviation	Recombinant Human MYLIP protein
Storage	The shelf life is related to many factors, storage state, buffer ingredients, storage temperature and the stability of the protein itself. Generally, the shelf life of liquid form is 6 months at -20°C/-80°C. The shelf life of lyophilized form is 12 months at -20°C/-80°C.
Uniprot No.	Q8WY64
Alias	Inducible degrader of the LDL-receptor ;IdolMyosin regulatory light chain interacting protein ;MIR
Product Type	Recombinant Protein
Immunogen Species	Homo sapiens (Human)
Purity	Greater than 90% as determined by SDS-PAGE.
Sequence	MLCYVTRPDAVLMEVEVEAKANGEDCLNQVCRRRLGIIEDYFGLQFTGSKGES LWLNLRNRISQQMDGLAPYRLKLRVKFFVEPHLILQEQTTRHIFFLHIKEALLAGH LLCSPEQAVELSALLAQTKFGDYNQNTAKYNYEELCAKELSSATLNSIVAKHKE LEGTSQASAEYQVLQIVSAMENYGIEWHSVRDSEGQKLLIGVGPEGISICKDDF SPINRIAYPVVQMATQSGKNVYLTVTKESGNSIVLLFKMISTRAASGLYRAITET HAFYRCDTVTSVMMQYSRDLKGHSLFLNENINLGKKYVFDIKRTSKEVYD HARRALYNAGVVDLVSRRNQSPSHSPLKSSESSMNCSSCEGLSCQQTRVLQ EKLRKLKEAMLCMVCCEEEINSTFCPCGHTVCCESCAAQLQSCPVCRSRVEH VQHVYLPHTHTSLLNLTVI
Research Area	Epigenetics and Nuclear Signaling
Source	E.coli
Target Names	MYLIP
Expression Region	1-445aa
Notes	Repeated freezing and thawing is not recommended. Store working aliquots at 4°C for up to one week.
Tag Info	N-terminal GST-tagged



Mol. Weight 76.9kDa

Protein Length Full Length

Image



(Tris-Glycine gel) Discontinuous SDS-PAGE (reduced) with 5% enrichment gel and 15% separation gel.

Reconstitution

We recommend that this vial be briefly centrifuged prior to opening to bring the contents to the bottom. Please reconstitute protein in deionized sterile water to a concentration of 0.1-1.0 mg/mL. We recommend to add 5-50% of glycerol (final concentration) and aliquot for long-term storage at -20°C/-80°C. Our default final concentration of glycerol is 50%. Customers could use it as reference.

Shelf Life

The shelf life is related to many factors, storage state, buffer ingredients, storage temperature and the stability of the protein itself. Generally, the shelf life of liquid form is 6 months at -20°C/-80°C. The shelf life of lyophilized form is 12 months at -20°C/-80°C.