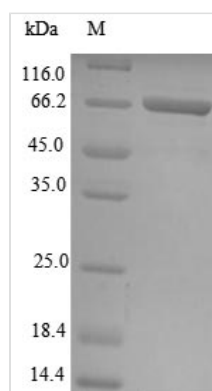
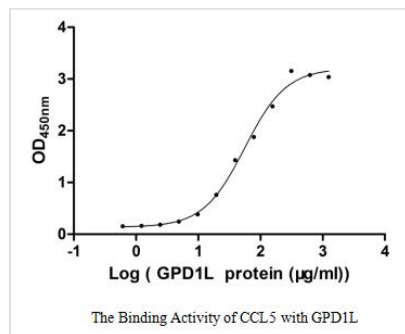




# Recombinant Human Glycerol-3-phosphate dehydrogenase 1-like protein (GPD1L) (Active)

<b>Product Code</b>	CSB-EP854029HU
<b>Relevance</b>	Plays a role in regulating cardiac sodium current; decreased enzymatic activity with resulting increased levels of glycerol 3-phosphate activating the DPD1L-dependent SCN5A phosphorylation pathway, may ultimately lead to decreased sodium current; cardiac sodium current may also be reduced due to alterations of NAD(H) balance induced by DPD1L.
<b>Abbreviation</b>	Recombinant Human GPD1L protein (Active)
<b>Storage</b>	The shelf life is related to many factors, storage state, buffer ingredients, storage temperature and the stability of the protein itself. Generally, the shelf life of liquid form is 6 months at -20°C/-80°C. The shelf life of lyophilized form is 12 months at -20°C/-80°C.
<b>Uniprot No.</b>	Q8N335
<b>Product Type</b>	Other
<b>Immunogen Species</b>	Homo sapiens (Human)
<b>Biological Activity</b>	Measured by its binding ability in a functional ELISA. Immobilized CCL5 at 2 µg/ml can bind human GPD1L, the EC50 of human GPD1L protein is 47.34-66.33 µg/ml.
<b>Purity</b>	Greater than 85% as determined by SDS-PAGE.
<b>Sequence</b>	MAAAPLKVCIVGSGNWGSAAVAKIIGNNVKKLQKFASTVKMWVFEETVNGRKLT DIINNDHENVKYLPGHKLPENNVAMSNLSEAVQDADLLVFVIPHQFIHRICDEIT GRVPKKALGITLIKIDEGPEGLKLISDIIREKMGIDISVLMGANIANEVAAEKFCFCE TTIGSKVMENGLLFKELLQTPNFRITVVDADTVELCGALKNIVAVGAGFCDGL RCGDNTKAAVIRLGLMEMIAFARIFCKGQVSTATFLESCGVADLITTCYGGRRNR RVAEAFARTGKTIEELEKEMLNGQKLQGPQTSAEVYRILKQKGLLDKFPLFTAV YQICYESRPVQEMLSCLQSHPEHT
<b>Research Area</b>	Cell Biology
<b>Source</b>	E.coli
<b>Target Names</b>	GPD1L
<b>Expression Region</b>	1-351aa
<b>Notes</b>	Repeated freezing and thawing is not recommended. Store working aliquots at 4°C for up to one week.
<b>Tag Info</b>	N-terminal GST-tagged
<b>Mol. Weight</b>	65.4 kDa
<b>Protein Length</b>	Full Length
<b>Image</b>	



(Tris-Glycine gel) Discontinuous SDS-PAGE (reduced) with 5% enrichment gel and 15% separation gel.

## Description

The product CSB-EP854029HU is an active recombinant human Glycerol-3-phosphate dehydrogenase 1-like protein (GPD1L). It is produced through several steps: clone the gene encoding full-length human GPD1L (1-351aa) and an N-terminal GST-tag into a plasmid, transfect the recombinant plasmid into the E.coli for protein expression, select the transfected cells by adding the specific antibiotic to the culture medium, harvest the transfected cells and lyse them to release cellular content, including the recombinant human GPD1L, and isolate and purify the recombinant protein. Its purity reaches up to 85%. In a functional ELISA, its activity is measured by binding to the CCL5, with the  $EC_{50}$  of 47.34-66.33  $\mu\text{g/ml}$ .

## Reconstitution

We recommend that this vial be briefly centrifuged prior to opening to bring the contents to the bottom. Please reconstitute protein in deionized sterile water to a concentration of 0.1-1.0 mg/mL. We recommend to add 5-50% of glycerol (final concentration) and aliquot for long-term storage at  $-20^{\circ}\text{C}/-80^{\circ}\text{C}$ . Our default final concentration of glycerol is 50%. Customers could use it as reference.

## Shelf Life

The shelf life is related to many factors, storage state, buffer ingredients, storage temperature and the stability of the protein itself. Generally, the shelf life of liquid form is 6 months at  $-20^{\circ}\text{C}/-80^{\circ}\text{C}$ . The shelf life of lyophilized form is 12 months at  $-20^{\circ}\text{C}/-80^{\circ}\text{C}$ .