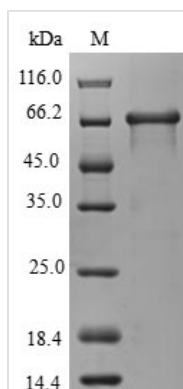




Recombinant Human WD repeat domain phosphoinositide-interacting protein 4 (WDR45)

Product Code	CSB-EP852773HU
Relevance	Plays an important role in the autophagy pathway, which is the major intracellular degradation system by which cytoplasmic materials are packaged into autophagosomes and delivered to lysosomes for degradation.
Abbreviation	Recombinant Human WDR45 protein
Storage	The shelf life is related to many factors, storage state, buffer ingredients, storage temperature and the stability of the protein itself. Generally, the shelf life of liquid form is 6 months at -20°C/-80°C. The shelf life of lyophilized form is 12 months at -20°C/-80°C.
Uniprot No.	Q9Y484
Alias	WD repeat-containing protein 45
Product Type	Recombinant Protein
Immunogen Species	Homo sapiens (Human)
Purity	Greater than 90% as determined by SDS-PAGE.
Sequence	MTQQPLRGVTS LR FNQDQSCFCCAMETGVRIYNVEPLMEKGHLDHEQVGSM GLVEMLHRSNLLALVGGGSSPKFSEISVLIWDDAREGKDSKEKLVLEFTFTKPV LSVRMRHDKIVIVLKNRIYVYSFPDNPRKLF EFDTRDNP KGLCDLCP SLEKQLL VFPGHKCGSLQLVDLASTKPGTSSAPFTINAHQSDIACVSLNQPGTVVASASQ KGT LIRLFD TQSKEKLVELRRGTD PATLYCINF SHDSSFLCASSDKGTVHIFALK DTRLNRRSALARVGKVGPMIGQYVDSQWSLASFTVPAESACICAFGRNTSKN VNSVIAICVDGTFHKYVFTPDGNCNREAFDVYLDICDDDDF
Research Area	Cell Biology
Source	E.coli
Target Names	WDR45
Expression Region	1-360aa
Notes	Repeated freezing and thawing is not recommended. Store working aliquots at 4°C for up to one week.
Tag Info	N-terminal GST-tagged
Mol. Weight	66.9kDa
Protein Length	Full Length
Image	



(Tris-Glycine gel) Discontinuous SDS-PAGE (reduced) with 5% enrichment gel and 15% separation gel.

Reconstitution

We recommend that this vial be briefly centrifuged prior to opening to bring the contents to the bottom. Please reconstitute protein in deionized sterile water to a concentration of 0.1-1.0 mg/mL. We recommend to add 5-50% of glycerol (final concentration) and aliquot for long-term storage at -20°C/-80°C. Our default final concentration of glycerol is 50%. Customers could use it as reference.

Shelf Life

The shelf life is related to many factors, storage state, buffer ingredients, storage temperature and the stability of the protein itself. Generally, the shelf life of liquid form is 6 months at -20°C/-80°C. The shelf life of lyophilized form is 12 months at -20°C/-80°C.