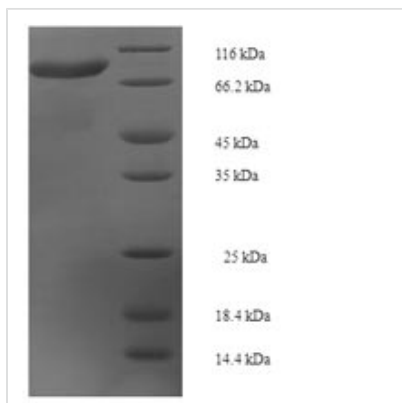




Recombinant Human Kelch-like protein 36 (KLHL36)

Product Code	CSB-EP850801HU
Relevance	Probable substrate-specific adapter of an E3 ubiquitin-protein ligase complex which mediates the ubiquitination and subsequent proteasomal degradation of target proteins.
Abbreviation	Recombinant Human KLHL36 protein
Storage	The shelf life is related to many factors, storage state, buffer ingredients, storage temperature and the stability of the protein itself. Generally, the shelf life of liquid form is 6 months at -20°C/-80°C. The shelf life of lyophilized form is 12 months at -20°C/-80°C.
Uniprot No.	Q8N4N3
Product Type	Recombinant Protein
Immunogen Species	Homo sapiens (Human)
Purity	Greater than 90% as determined by SDS-PAGE.
Sequence	<p>MMEGSRQTRVSRPYKISESSKVYRWADHSSTVLQRLNEQRLRGLFCDVVLVA DEQRVPAHRNLLAVCSDYFNSMFTIGMREAFQKEVELIGASYIGLKAVVDFLYG GELVLDGGNIDYVLETAHLLQIWTVVDFCCEYLEQEVSSEDNYLYLQELASIYSL KRLDAFIDGFILNHFGTLSFTPDFLQNVSMQKLCVYLSSSEVQRECEHDLLQAA LQWLTQQPEREAHARQVLENIHFPLIPKNDLLHRVKPAVCSLLPKEANCEGFIE EAVRYHNNLAAQPVMQTKRTALRTNQERLLFVGGEVSERCLELSDDTCYLDA KSEQWVKETPLPARRSHHCVAVLGGFIFIAGGSFSRDNGGDAASNLLYRFTYG HAGTIYKDFVYISGGHDYQIGPYRKNLLCYDHRTDVWEERRPMTTARGWHSM CSLGDSIYSIGGSDDNIESMERFDVLGVEAYSPQCNCQWTRVAPLLHANSESGV AVWEGRIYILGGYSWENTAFSKTVQVYDREADKWSRGVDLPKAIAGGSACVC ALEPRPEDKKKKKGKGRHQDRGQ</p>
Research Area	Cell Biology
Source	E.coli
Target Names	KLHL36
Expression Region	1-553aa
Notes	Repeated freezing and thawing is not recommended. Store working aliquots at 4°C for up to one week.
Tag Info	N-terminal 6xHis-SUMO-tagged
Mol. Weight	78.8kDa
Protein Length	Full Length of Isoform 2
Image	



(Tris-Glycine gel) Discontinuous SDS-PAGE (reduced) with 5% enrichment gel and 15% separation gel.

Reconstitution

We recommend that this vial be briefly centrifuged prior to opening to bring the contents to the bottom. Please reconstitute protein in deionized sterile water to a concentration of 0.1-1.0 mg/mL. We recommend to add 5-50% of glycerol (final concentration) and aliquot for long-term storage at -20°C/-80°C. Our default final concentration of glycerol is 50%. Customers could use it as reference.

Shelf Life

The shelf life is related to many factors, storage state, buffer ingredients, storage temperature and the stability of the protein itself. Generally, the shelf life of liquid form is 6 months at -20°C/-80°C. The shelf life of lyophilized form is 12 months at -20°C/-80°C.