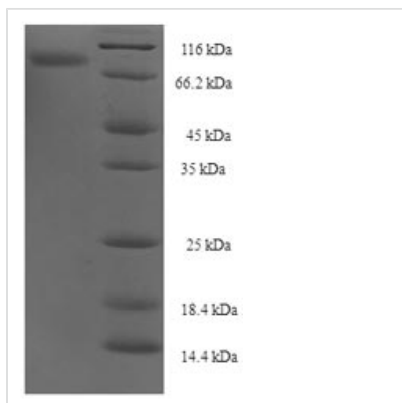




Recombinant Human NXPE family member 3 (NXPE3)

Product Code	CSB-EP846579HU
Abbreviation	Recombinant Human NXPE3 protein
Storage	The shelf life is related to many factors, storage state, buffer ingredients, storage temperature and the stability of the protein itself. Generally, the shelf life of liquid form is 6 months at -20°C/-80°C. The shelf life of lyophilized form is 12 months at -20°C/-80°C.
Uniprot No.	Q969Y0
Product Type	Recombinant Proteins
Immunogen Species	Homo sapiens (Human)
Purity	Greater than 90% as determined by SDS-PAGE.
Sequence	EYLDHETVSATFIDSSGQFVSSQVTGISRNPYCGYDQQTLSSQERMEEDSLLA ALHRQVPDVGVPFVKSTDPSSSYFVILNSA AFFKVG SQLEVLVHVQDFQRKP KKYGGDY LQARIHSLKLQAGAVGRVVDYQNGFYKVFFTLWPGKVKVS VSLV HPSEGIRVLQRLQEDKPDRVYFKSLFRSGRISETTECNVCLPGNLPLCNFTDLY TGEPWFCFKPKKLPCSSRITHFKGGY LKGLLTAAESAFFQSGVNIKMPVNSSG PDWVTVIPRIKETNSLELSQGS GTFPSGYYYKDQWRPRKFKMRQFNDPDNI TECLQRKV VHLFGDSTIRQWFEYLTTFVPDLVEFN LGSPKNVGPFLAVDQKH N ILLKYRCHGPPIRFTTVFSNELHYVANELNGIVGGKNTVVAIAVWSHFSTFPLEV YIRRLRNIRRAVVRLLDRSPKTVVVIRTANAQELGPEVSLFNSDWYNFQLDTILR RMFSGVG VYLVD AEWMTLAHYLPHKLHPDEVIVKNQLDMFLSFVCPLET
Research Area	Neuroscience
Source	E.coli
Target Names	NXPE3
Expression Region	31-559aa
Notes	Repeated freezing and thawing is not recommended. Store working aliquots at 4°C for up to one week.
Tag Info	N-terminal 6xHis-SUMO-tagged
Mol. Weight	76.3kDa
Protein Length	Full Length of Mature Protein
Image	



(Tris-Glycine gel) Discontinuous SDS-PAGE (reduced) with 5% enrichment gel and 15% separation gel.

Shelf Life

The shelf life is related to many factors, storage state, buffer ingredients, storage temperature and the stability of the protein itself. Generally, the shelf life of liquid form is 6 months at -20°C/-80°C. The shelf life of lyophilized form is 12 months at -20°C/-80°C.