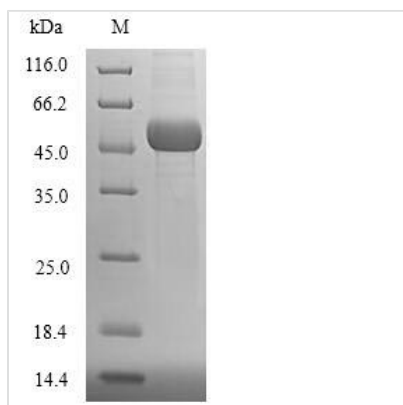




Recombinant Human Ubiquitin-conjugating enzyme E2 Q2 (UBE2Q2)

Product Code	CSB-EP845153HU
Relevance	Accepts ubiquitin from the E1 complex and catalyzes its covalent attachment to other proteins. In vitro catalyzes 'Lys-48'-linked polyubiquitination.
Abbreviation	Recombinant Human UBE2Q2 protein
Storage	The shelf life is related to many factors, storage state, buffer ingredients, storage temperature and the stability of the protein itself. Generally, the shelf life of liquid form is 6 months at -20°C/-80°C. The shelf life of lyophilized form is 12 months at -20°C/-80°C.
Uniprot No.	Q8WVN8
Alias	Ubiquitin carrier protein Q2Ubiquitin-protein ligase Q2
Product Type	Recombinant Protein
Immunogen Species	Homo sapiens (Human)
Purity	Greater than 90% as determined by SDS-PAGE.
Sequence	MSVSGLKAE LKFLASIFDKNHERFRIVSWKLDELHCQFLVPQQGSPHSLPPPLT LHCNITESYPSSSPIWFDSEDPNLTSVLERLEDTKNNNLLRQQLKWLICELCS LYNLPKHLDVEMLDQPLPTGQNGTTEEVTS EEEEEEEEMAEDIEDLDHYEMKE E EPISGKKSEDEGIEKENLAILEKIRKTQRQDHLNGAVSGSVQASDRMLKELRD IYRSQSYKTGIYSVELINDSLYDWHVKLQKVDPSPLHSDLQILKEKEGIEYILLN FSFKDNFPDPPFVRVLPVLSGGYVLGGGALCMELLTKQGWSSAYSIESVIM QINATLVKKGKARVQFGANKNQYNLARAQQSYNSIVQIHEKNGWYTPPKEDG
Research Area	Epigenetics and Nuclear Signaling
Source	E.coli
Target Names	UBE2Q2
Expression Region	1-375aa
Notes	Repeated freezing and thawing is not recommended. Store working aliquots at 4°C for up to one week.
Tag Info	N-terminal 6xHis-SUMO-tagged
Mol. Weight	58.8kDa
Protein Length	Full Length
Image	



(Tris-Glycine gel) Discontinuous SDS-PAGE (reduced) with 5% enrichment gel and 15% separation gel.

Reconstitution

We recommend that this vial be briefly centrifuged prior to opening to bring the contents to the bottom. Please reconstitute protein in deionized sterile water to a concentration of 0.1-1.0 mg/mL. We recommend to add 5-50% of glycerol (final concentration) and aliquot for long-term storage at -20°C/-80°C. Our default final concentration of glycerol is 50%. Customers could use it as reference.

Shelf Life

The shelf life is related to many factors, storage state, buffer ingredients, storage temperature and the stability of the protein itself. Generally, the shelf life of liquid form is 6 months at -20°C/-80°C. The shelf life of lyophilized form is 12 months at -20°C/-80°C.