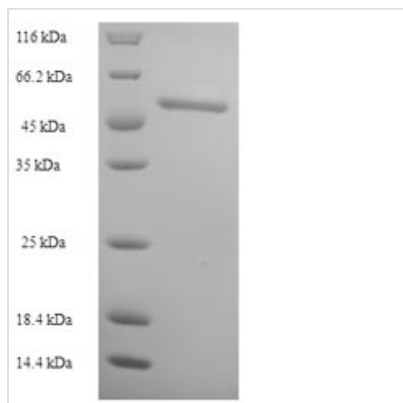




Recombinant Human Retinol dehydrogenase 12 (RDH12)

Product Code	CSB-EP842727HU
Relevance	Exhibits an oxidoreductive catalytic activity towards retinoids. Most efficient as an NADPH-dependent retinal reductase. Displays high activity toward 9-cis and all-trans-retinol. Also involved in the metabolism of short-chain aldehydes. No steroid dehydrogenase activity detected. Might be the key enzyme in the formation of 11-cis-retinal from 11-cis-retinol during regeneration of the cone visual pigments.
Abbreviation	Recombinant Human RDH12 protein
Storage	The shelf life is related to many factors, storage state, buffer ingredients, storage temperature and the stability of the protein itself. Generally, the shelf life of liquid form is 6 months at -20°C/-80°C. The shelf life of lyophilized form is 12 months at -20°C/-80°C.
Uniprot No.	Q96NR8
Alias	All-trans and 9-cis retinol dehydrogenase;Short chain dehydrogenase/reductase family 7C member 2
Product Type	Recombinant Protein
Immunogen Species	Homo sapiens (Human)
Purity	Greater than 90% as determined by SDS-PAGE.
Sequence	MLVTLGLLTSFFSFLYMVAPSIRKFFAGGVCRTNVQLPGKVVVITGANTGIGKE TARELASRGARVYIACRDVLKGESAASEIRVDTKNSQVLVRKLDLSDTKSIRAF AEGFLAEEKQLHILINNAGVMMCPYSKTADGFETHLGVNHLGHFLLTYLLLERL KVSAPARVVNVSSVAHHIGKIPFHDQLQSEKRYSRGFAYCHSKLANVLFTRERAK RLQGTGVTTYAVHPGVVRSELVRHSSLLCLLWRLFSPFVKTAAREGAQTSLSHCA LAEGLEPLSGKYFSDCKRTWVSPRARNNKTAERLWNVSCCELLGIRWE
Research Area	Metabolism
Source	E.coli
Target Names	RDH12
Expression Region	1-316aa
Notes	Repeated freezing and thawing is not recommended. Store working aliquots at 4°C for up to one week.
Tag Info	N-terminal 6xHis-SUMO-tagged
Mol. Weight	51.1kDa
Protein Length	Full Length
Image	



(Tris-Glycine gel) Discontinuous SDS-PAGE (reduced) with 5% enrichment gel and 15% separation gel.

Reconstitution

We recommend that this vial be briefly centrifuged prior to opening to bring the contents to the bottom. Please reconstitute protein in deionized sterile water to a concentration of 0.1-1.0 mg/mL. We recommend to add 5-50% of glycerol (final concentration) and aliquot for long-term storage at -20°C/-80°C. Our default final concentration of glycerol is 50%. Customers could use it as reference.

Shelf Life

The shelf life is related to many factors, storage state, buffer ingredients, storage temperature and the stability of the protein itself. Generally, the shelf life of liquid form is 6 months at -20°C/-80°C. The shelf life of lyophilized form is 12 months at -20°C/-80°C.