



Recombinant Human Probable methylthioribulose-1-phosphate dehydratase (APIP)

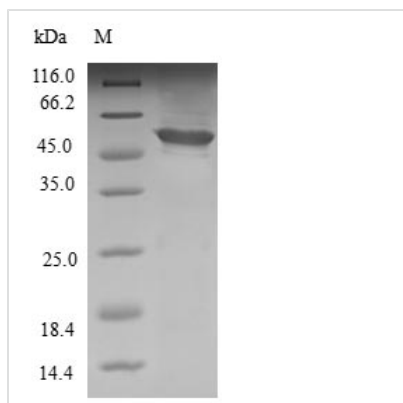
Product Code	CSB-EP839332HU
Relevance	Catalyzes the dehydration of methylthioribulose-1-phosphate (MTRu-1-P) into 2,3-diketo-5-methylthiopentyl-1-phosphate (DK-MTP-1-P). Functions in the methionine salvage pathway, which plays a key role in cancer, apoptosis, microbial proliferation and inflammation. May inhibit the CASP1-related inflammatory response (pyroptosis), the CASP9-dependent apoptotic pathway and the cytochrome c-dependent and APAF1-mediated cell death.
Abbreviation	Recombinant Human APIP protein
Storage	The shelf life is related to many factors, storage state, buffer ingredients, storage temperature and the stability of the protein itself. Generally, the shelf life of liquid form is 6 months at -20°C/-80°C. The shelf life of lyophilized form is 12 months at -20°C/-80°C.
Uniprot No.	Q96GX9
Alias	APAF1-interacting protein
Product Type	Recombinant Protein
Immunogen Species	Homo sapiens (Human)
Purity	Greater than 90% as determined by SDS-PAGE.
Sequence	MSGCDAREGDCCSRRCGAQDKEHPRYLIPELCKQFYHLGWVTGTGGGISLK HGDEIYIAPSGVQKERIQPEDMFVCDINEKDISGSPSPSKLKKSQCTPLFMNAY TMRGAGAVIHTHSKAAVMATLLFPGREFKITHQEMIKGIKKCTSGGYRYDDM LVVPIIENTPEEKDLKDRMAHAMNEYPDSCAVLVRRHGVYVWGETWEKAKTM CECYDYLFDAVSMKKVGLDPSQLPVGENGIV
Research Area	Cell Biology
Source	E.coli
Target Names	APIP
Protein Names	Recommended name: Probable methylthioribulose-1-phosphate dehydratase Short name= MTRu-1-P dehydratase EC= 4.2.1.109 Alternative name(s): APAF1-interacting protein
Expression Region	1-242aa
Notes	Repeated freezing and thawing is not recommended. Store working aliquots at 4°C for up to one week.
Tag Info	N-terminal GST-tagged
Mol. Weight	54.1kDa



Protein Length

Full Length

Image



(Tris-Glycine gel) Discontinuous SDS-PAGE (reduced) with 5% enrichment gel and 15% separation gel.

Reconstitution

We recommend that this vial be briefly centrifuged prior to opening to bring the contents to the bottom. Please reconstitute protein in deionized sterile water to a concentration of 0.1-1.0 mg/mL. We recommend to add 5-50% of glycerol (final concentration) and aliquot for long-term storage at -20°C/-80°C. Our default final concentration of glycerol is 50%. Customers could use it as reference.

Shelf Life

The shelf life is related to many factors, storage state, buffer ingredients, storage temperature and the stability of the protein itself. Generally, the shelf life of liquid form is 6 months at -20°C/-80°C. The shelf life of lyophilized form is 12 months at -20°C/-80°C.