

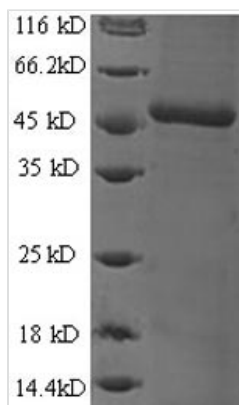


# Recombinant Human DCN1-like protein 1 (DCUN1D1)

<b>Product Code</b>	CSB-EP839329HU
<b>Relevance</b>	Part of an E3 ubiquitin ligase complex for neddylation. Promotes neddylation of cullin components of E3 cullin-RING ubiquitin ligase complexes. Acts by binding to cullin-RBX1 complexes in the cytoplasm and promoting their nuclear translocation, enhancing recruitment of E2-NEDD8 (UBE2M-NEDD8) thioester to the complex, and optimizing the orientation of proteins in the complex to allow efficient transfer of NEDD8 from the E2 to the cullin substrates . Involved in the release of inhibitory effects of CAND1 on cullin-RING ligase E3 complex assembly and activity. Acts also as an oncogene facilitating malignant transformation and carcinogenic progression .1 Publication
<b>Abbreviation</b>	Recombinant Human DCUN1D1 protein
<b>Storage</b>	The shelf life is related to many factors, storage state, buffer ingredients, storage temperature and the stability of the protein itself. Generally, the shelf life of liquid form is 6 months at -20°C/-80°C. The shelf life of lyophilized form is 12 months at -20°C/-80°C.
<b>Uniprot No.</b>	Q96GG9
<b>Alias</b>	DCUN1 domain-containing protein 1Defective in cullin neddylation protein 1-like protein 1Squamous cell carcinoma-related oncogene
<b>Product Type</b>	Recombinant Protein
<b>Immunogen Species</b>	Homo sapiens (Human)
<b>Purity</b>	Greater than 90% as determined by SDS-PAGE.
<b>Sequence</b>	MNKLKSSQKDKVRQFMIFTQSSEKTAVSCLSQNDWKLDVATDNFFQNPelyir ESVKGSLDRKKLEQLYNRYKDPQDENKIGIDGIQQFCDDLALDPASISVLIIAWK FRAATQCEFSKQEFMDGMTELGCDSIEKLKAQIPKMEQELKEPGRFKDFYQFT FNFAKNPGQKGLDLEMAIAYWNLVLNGRKFkFLDLWNKFLLEHHKRSIPKDTWN LLLDfstMIADDMSNYDEEGAWPVLIDDFVEFARPQIAGTKSTTV
<b>Research Area</b>	Cancer
<b>Source</b>	E.coli
<b>Target Names</b>	DCUN1D1
<b>Expression Region</b>	1-259aa
<b>Notes</b>	Repeated freezing and thawing is not recommended. Store working aliquots at 4°C for up to one week.
<b>Tag Info</b>	N-terminal 6xHis-SUMO-tagged
<b>Mol. Weight</b>	46.1kDa
<b>Protein Length</b>	Full Length



## Image



(Tris-Glycine gel) Discontinuous SDS-PAGE (reduced) with 5% enrichment gel and 15% separation gel.

## Reconstitution

We recommend that this vial be briefly centrifuged prior to opening to bring the contents to the bottom. Please reconstitute protein in deionized sterile water to a concentration of 0.1-1.0 mg/mL. We recommend to add 5-50% of glycerol (final concentration) and aliquot for long-term storage at -20°C/-80°C. Our default final concentration of glycerol is 50%. Customers could use it as reference.

## Shelf Life

The shelf life is related to many factors, storage state, buffer ingredients, storage temperature and the stability of the protein itself. Generally, the shelf life of liquid form is 6 months at -20°C/-80°C. The shelf life of lyophilized form is 12 months at -20°C/-80°C.