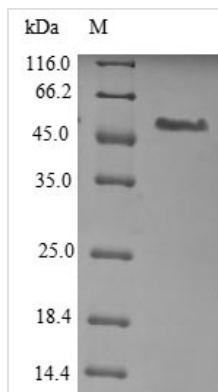




Recombinant Mouse Plexin domain-containing protein 1 (Plxdc1), partial

Product Code	CSB-EP838718MO
Relevance	Plays a critical role in endothelial cell capillary morphogenesis.
Abbreviation	Recombinant Mouse Plxdc1 protein, partial
Storage	The shelf life is related to many factors, storage state, buffer ingredients, storage temperature and the stability of the protein itself. Generally, the shelf life of liquid form is 6 months at -20°C/-80°C. The shelf life of lyophilized form is 12 months at -20°C/-80°C.
Uniprot No.	Q91ZV7
Product Type	Recombinant Protein
Immunogen Species	Mus musculus (Mouse)
Purity	Greater than 85% as determined by SDS-PAGE.
Sequence	LSPATPAGHNEGQDSAWTAKRTRQGWSRRPRESPAQVLKPGKTQLSQDLG GGSLAIDTLPDNRTRVVEDNHNYYVSRVYGPGEKQSQDLWVDLAVANRSHVK IHRILSSSHRQASRVVLSFDFPFYGHPLRQITIATGGFIFMGDMLHRMLTATQYV APLMANFNPGYSDNSTVAYFDNGTVFVVQWDHVVYLQDREDRGSFTFQAALH RDGRIVFGYKEIPMAVLDISSAQHPVKAGLSDAFMILNSSPEVPASQRRRTIFEY HRVELDSSKITTTSAVEFTPLPTCLQHQCSDTCVSSNLTFNCWCHVLQRCSS GFDYRQEWLTYGCAQEAEGKTCEDFQDDSHYSASPDSSFSFNGDSTTSS SLFIDSLTTEDDTKLNPYAEGDGLPDHSSPKSKGPPVHLGT
Research Area	Cardiovascular
Source	E.coli
Target Names	Plxdc1
Protein Names	Tumor endothelial marker 7 Tem7
Expression Region	20-426aa
Notes	Repeated freezing and thawing is not recommended. Store working aliquots at 4°C for up to one week.
Tag Info	N-terminal 6xHis-tagged
Mol. Weight	49.3 kDa
Protein Length	Partial
Image	



(Tris-Glycine gel) Discontinuous SDS-PAGE (reduced) with 5% enrichment gel and 15% separation gel.

Description

Constructing a plasmid that codes for the Mouse Plxdc1 protein (20-426aa) is the initial step to yield the recombinant Mouse Plxdc1 protein. The plasmid is then transferred into e.coli cells. Positive e.coli cells are selected and cultured for the protein expression. A N-terminal 6xHis tag is fused to the protein. The affinity purification is used to purify the protein, and SDS-PAGE analysis is carried out to verify the presence and assess the purity of the protein. The protein possesses a purity exceeding 85%.

Reconstitution

We recommend that this vial be briefly centrifuged prior to opening to bring the contents to the bottom. Please reconstitute protein in deionized sterile water to a concentration of 0.1-1.0 mg/mL. We recommend to add 5-50% of glycerol (final concentration) and aliquot for long-term storage at -20°C/-80°C. Our default final concentration of glycerol is 50%. Customers could use it as reference.

Shelf Life

The shelf life is related to many factors, storage state, buffer ingredients, storage temperature and the stability of the protein itself. Generally, the shelf life of liquid form is 6 months at -20°C/-80°C. The shelf life of lyophilized form is 12 months at -20°C/-80°C.