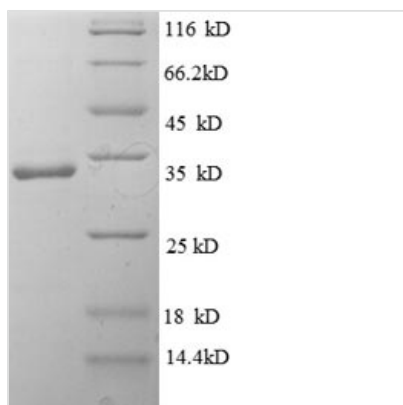




# Recombinant Human Interleukin-1 family member 10 (IL1F10)

<b>Product Code</b>	CSB-EP837869HU
<b>Relevance</b>	Cytokine with immunomodulatory activity. Alone, does not induce cytokine production, but reduces IL22 and IL17A production by T-cells in response to heat-killed Candida albicans. Reduces IL36G-induced production of IL8 by peripheral blood mononuclear cells. Increases IL6 production by dendritic cells stimulated by bacterial lipopolysaccharides (LPS). Ligand for IL-36R/IL1RL2.
<b>Abbreviation</b>	Recombinant Human IL1F10 protein
<b>Storage</b>	The shelf life is related to many factors, storage state, buffer ingredients, storage temperature and the stability of the protein itself. Generally, the shelf life of liquid form is 6 months at -20°C/-80°C. The shelf life of lyophilized form is 12 months at -20°C/-80°C.
<b>Uniprot No.</b>	Q8WWZ1
<b>Alias</b>	Family of interleukin 1-theta ;FIL1 thetaInterleukin-1 HY2 ;IL-1HY2Interleukin-1 theta ;IL-1 thetaInterleukin-38 ;IL-38
<b>Product Type</b>	Recombinant Protein
<b>Immunogen Species</b>	Homo sapiens (Human)
<b>Purity</b>	Greater than 90% as determined by SDS-PAGE.
<b>Sequence</b>	MCSLPMARYYIIKYADQKALYTRDGQLLVGDPVADNCCAEEKICILPNRGLARTK VPIFLGIQGGSRCLACVETEEGPSLQLEDVNIEELYKGGEEATRFTFFQSSSGS AFRLEAAAWPGWFLCGPAEPQQPVQLTKESEPSARTKFYFEQSW
<b>Research Area</b>	Immunology
<b>Source</b>	E.coli
<b>Target Names</b>	IL1F10
<b>Expression Region</b>	1-152aa
<b>Notes</b>	Repeated freezing and thawing is not recommended. Store working aliquots at 4°C for up to one week.
<b>Tag Info</b>	N-terminal 6xHis-SUMO-tagged
<b>Mol. Weight</b>	32.9kDa
<b>Protein Length</b>	Full Length
<b>Image</b>	



(Tris-Glycine gel) Discontinuous SDS-PAGE (reduced) with 5% enrichment gel and 15% separation gel.

### Reconstitution

We recommend that this vial be briefly centrifuged prior to opening to bring the contents to the bottom. Please reconstitute protein in deionized sterile water to a concentration of 0.1-1.0 mg/mL. We recommend to add 5-50% of glycerol (final concentration) and aliquot for long-term storage at -20°C/-80°C. Our default final concentration of glycerol is 50%. Customers could use it as reference.

### Shelf Life

The shelf life is related to many factors, storage state, buffer ingredients, storage temperature and the stability of the protein itself. Generally, the shelf life of liquid form is 6 months at -20°C/-80°C. The shelf life of lyophilized form is 12 months at -20°C/-80°C.