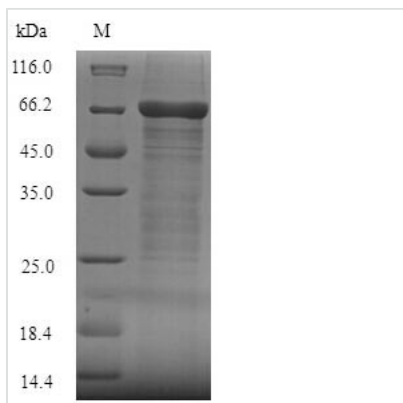




Recombinant Human Fc receptor-like protein 4 (FCRL4), partial

Product Code	CSB-EP836277HU
Relevance	May function as an inhibitor of the B-cell receptor signaling. May function in the B-cell-mediated immune response.
Abbreviation	Recombinant Human FCRL4 protein, partial
Storage	The shelf life is related to many factors, storage state, buffer ingredients, storage temperature and the stability of the protein itself. Generally, the shelf life of liquid form is 6 months at -20°C/-80°C. The shelf life of lyophilized form is 12 months at -20°C/-80°C.
Uniprot No.	Q96PJ5
Alias	Fc receptor homolog 4 Short name: FcRH4 IFGP family protein 2 Short name: hIFGP2 Immune receptor translocation-associated protein 1 CD_antigen: CD307d
Product Type	Recombinant Protein
Immunogen Species	Homo sapiens (Human)
Purity	Greater than 90% as determined by SDS-PAGE.
Sequence	AHKPVISVHPPWTTFFKGERVTLTCNGFQFYATEKTTWYHRHYWGEKLTLP GNTLEVRESGLYRCQARGSPRSNPVRLLFSSDSLILQAPYSVFEGDTLVLRCH RRRKEKLTAVKYTWNGNLSISNKSVDLLIPQASSNNGNYRCIGYGDENDVF RSNFKIIQELFPHPELKATDSQPTEGNSVNLSCETQLPPERSDTPLHFNFFR DGEVILSDWSTYPELQLPTVWRENSGSYWCGAETVRGNIHKHSPSLQIHVQRI PVSGVLLETQPSGGQAVEGEMLVLCVSAEGTGDTTFSWHREDMQESLGRK TQRSLRAELELPAIRQSHAGGYCTADNSYGPVQSMVLNVTVRETPGNRDGL
Research Area	Immunology
Source	E.coli
Target Names	FCRL4
Expression Region	20-387aa
Notes	Repeated freezing and thawing is not recommended. Store working aliquots at 4°C for up to one week.
Tag Info	N-terminal 6xHis-SUMO-tagged
Mol. Weight	57.6kDa
Protein Length	Extracellular Domain
Image	



(Tris-Glycine gel) Discontinuous SDS-PAGE (reduced) with 5% enrichment gel and 15% separation gel.

Reconstitution

We recommend that this vial be briefly centrifuged prior to opening to bring the contents to the bottom. Please reconstitute protein in deionized sterile water to a concentration of 0.1-1.0 mg/mL. We recommend to add 5-50% of glycerol (final concentration) and aliquot for long-term storage at -20°C/-80°C. Our default final concentration of glycerol is 50%. Customers could use it as reference.

Shelf Life

The shelf life is related to many factors, storage state, buffer ingredients, storage temperature and the stability of the protein itself. Generally, the shelf life of liquid form is 6 months at -20°C/-80°C. The shelf life of lyophilized form is 12 months at -20°C/-80°C.