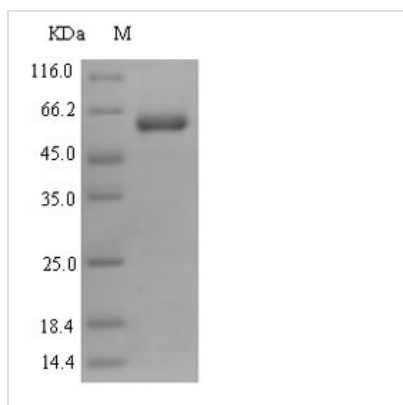




Recombinant Human Proline-rich protein 11 (PRR11)

Product Code	CSB-EP836225HU
Relevance	Plays a critical role in cell cycle progression.
Abbreviation	Recombinant Human PRR11 protein
Storage	The shelf life is related to many factors, storage state, buffer ingredients, storage temperature and the stability of the protein itself. Generally, the shelf life of liquid form is 6 months at -20°C/-80°C. The shelf life of lyophilized form is 12 months at -20°C/-80°C.
Uniprot No.	Q96HE9
Product Type	Recombinant Protein
Immunogen Species	Homo sapiens (Human)
Purity	Greater than 90% as determined by SDS-PAGE.
Sequence	MPKFKQRRRKLKAKAERLFKKKEASHFQSKLITPPPPPPSPERVGISSIDISQS RSWLTSSWNFNFPNIRDAIKLWTNRVWSIYSWCQNCITQSLEVLKDTIFPSRIC HRELYSVKQQFCILESKLCKLQEALKTISESSSCPSCGQTCHMSGKLTNPAC VLITPGDSKAVLPPTLPQPASHFPPPPPPPLPPPPPLAPVLLRKPSLAKALQ AGPLKKDGPMQITVKDLLTVKLKKTQSLDEKRKLIPSPKARNPLTVSDLQHVT LKPNISKVLSTRVTNVLITPGKSQMDLRKLLRKVDVERSPPGGTPLTNKENMETG TGLTPVMTQALRRKFQLAHPRSPTPTLPLSTSSFDEQN
Research Area	Cancer
Source	E.coli
Target Names	PRR11
Expression Region	1-360aa
Notes	Repeated freezing and thawing is not recommended. Store working aliquots at 4°C for up to one week.
Tag Info	N-terminal 6xHis-SUMO-tagged
Mol. Weight	56.1kDa
Protein Length	Full Length
Image	



(Tris-Glycine gel) Discontinuous SDS-PAGE (reduced) with 5% enrichment gel and 15% separation gel.

Reconstitution

We recommend that this vial be briefly centrifuged prior to opening to bring the contents to the bottom. Please reconstitute protein in deionized sterile water to a concentration of 0.1-1.0 mg/mL. We recommend to add 5-50% of glycerol (final concentration) and aliquot for long-term storage at -20°C/-80°C. Our default final concentration of glycerol is 50%. Customers could use it as reference.

Shelf Life

The shelf life is related to many factors, storage state, buffer ingredients, storage temperature and the stability of the protein itself. Generally, the shelf life of liquid form is 6 months at -20°C/-80°C. The shelf life of lyophilized form is 12 months at -20°C/-80°C.