



Recombinant Human Patatin-like phospholipase domain-containing protein 2 (PNPLA2)

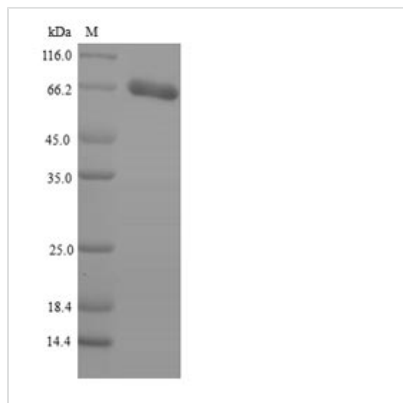
Product Code	CSB-EP836180HU
Relevance	Catalyzes the initial step in triglyceride hydrolysis in adipocyte and non-adipocyte lipid droplets. Also has acylglycerol transacylase activity. May act coordinately with LIPE/HLS within the lipolytic cascade. Regulates adiposome size and may be involved in the degradation of adiposomes. May play an important role in energy homeostasis. May play a role in the response of the organism to starvation, enhancing hydrolysis of triglycerides and providing free fatty acids to other tissues to be oxidized in situations of energy depletion
Abbreviation	Recombinant Human PNPLA2 protein
Storage	The shelf life is related to many factors, storage state, buffer ingredients, storage temperature and the stability of the protein itself. Generally, the shelf life of liquid form is 6 months at -20°C/-80°C. The shelf life of lyophilized form is 12 months at -20°C/-80°C.
Uniprot No.	Q96AD5
Alias	Adipose triglyceride lipase Calcium-independent phospholipase A2 Desnutrin IPLA2-zeta Pigment epithelium-derived factor TTS2.2 Transport-secretion protein 2 Short name:TTS2
Product Type	Recombinant Protein
Immunogen Species	Homo sapiens (Human)
Purity	Greater than 90% as determined by SDS-PAGE.
Sequence	MFPREKTWNISFAGCGFLGVYYVGVASCLREHAPFLVANATHIYGASAGALTA TALVTGVCLGEAGAKFIEVSKEARKRFLGPLHPSFNLVKIIRSFLKVLPA DSHEHAGRLGISLTRVSDGENVIISHFNSKDELIQANVC SGFIPVYCGLIPPSLQGV RYVDGGISDNLPYELKNTITVSPFSGESDIPQDSSTNIHELRTNTSIQFNL RNLYRLSKALFPPEPLVLREMCKQGYRDGLRFLQRNGLLNRPNPLLALPPAR PHGPEDKDQAVESAQAEDYSQLPGEDHILEHLPARLNEALLEACVEPTDLL TTLSNMLPVRLATAMMVPYTLPLESALSFTIRLLEWLDPVPEDIRWMKEQT GSICQYLV MRAKRKLGRHLP SRLPEQVELRRVQSLPSVPLSCAAYREALPG WMRNNLSLG DALAKWEECQRQLLLGLFCTNVAFPPEALRM RAPADPAPAPAD PASPQHQLA GPAPLLSTPAPEARPVIGALGL
Research Area	Cardiovascular
Source	E.coli
Target Names	PNPLA2
Expression Region	1-504aa
Notes	Repeated freezing and thawing is not recommended. Store working aliquots at 4°C for up to one week.
Tag Info	N-terminal 6xHis-SUMO-tagged



Mol. Weight 71.3kDa

Protein Length Full Length

Image



(Tris-Glycine gel) Discontinuous SDS-PAGE (reduced) with 5% enrichment gel and 15% separation gel.

Reconstitution

We recommend that this vial be briefly centrifuged prior to opening to bring the contents to the bottom. Please reconstitute protein in deionized sterile water to a concentration of 0.1-1.0 mg/mL. We recommend to add 5-50% of glycerol (final concentration) and aliquot for long-term storage at -20°C/-80°C. Our default final concentration of glycerol is 50%. Customers could use it as reference.

Shelf Life

The shelf life is related to many factors, storage state, buffer ingredients, storage temperature and the stability of the protein itself. Generally, the shelf life of liquid form is 6 months at -20°C/-80°C. The shelf life of lyophilized form is 12 months at -20°C/-80°C.