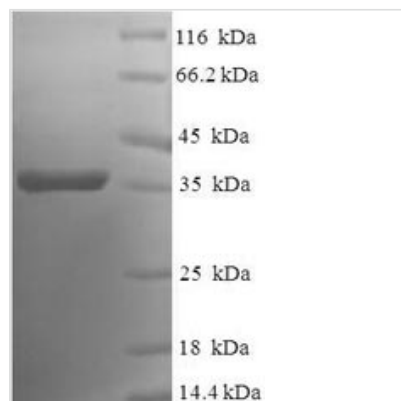




Recombinant Human Bcl-2-like protein 2 (BCL2L2)

Product Code	CSB-EP821707HU
Relevance	Promotes cell survival. Blocks dexamethasone-induced apoptosis. Mediates survival of postmitotic Sertoli cells by suppressing death-promoting activity of BAX.
Abbreviation	Recombinant Human BCL2L2 protein
Storage	The shelf life is related to many factors, storage state, buffer ingredients, storage temperature and the stability of the protein itself. Generally, the shelf life of liquid form is 6 months at -20°C/-80°C. The shelf life of lyophilized form is 12 months at -20°C/-80°C.
Uniprot No.	Q92843
Alias	Apoptosis regulator Bcl-W
Product Type	Recombinant Protein
Immunogen Species	Homo sapiens (Human)
Purity	Greater than 90% as determined by SDS-PAGE.
Sequence	ATPASAPDTRALVADFLVGYKLRQKGYVCGAGPGEGPAADPLHQAMRAAGDE FETRFRRTFSDLAAQLHVTPGSAQQRFTQVSDQLFQGGPNWGRLVAFFVFGA ALCAESVNKEMEPLVGQVQEWVMVAYLETQLADWIHSSGGWAEFTALYGDGA LEEARRLREGNWASVRTVLTGAVALGALVTVGAFFASK
Research Area	Cancer
Source	E.coli
Target Names	BCL2L2
Expression Region	2-193aa
Notes	Repeated freezing and thawing is not recommended. Store working aliquots at 4°C for up to one week.
Tag Info	N-terminal 6xHis-SUMO-tagged
Mol. Weight	36.6kDa
Protein Length	Full Length of Mature Protein

Image



(Tris-Glycine gel) Discontinuous SDS-PAGE (reduced) with 5% enrichment gel and 15% separation gel.



Reconstitution

We recommend that this vial be briefly centrifuged prior to opening to bring the contents to the bottom. Please reconstitute protein in deionized sterile water to a concentration of 0.1-1.0 mg/mL. We recommend to add 5-50% of glycerol (final concentration) and aliquot for long-term storage at -20°C/-80°C. Our default final concentration of glycerol is 50%. Customers could use it as reference.

Shelf Life

The shelf life is related to many factors, storage state, buffer ingredients, storage temperature and the stability of the protein itself. Generally, the shelf life of liquid form is 6 months at -20°C/-80°C. The shelf life of lyophilized form is 12 months at -20°C/-80°C.