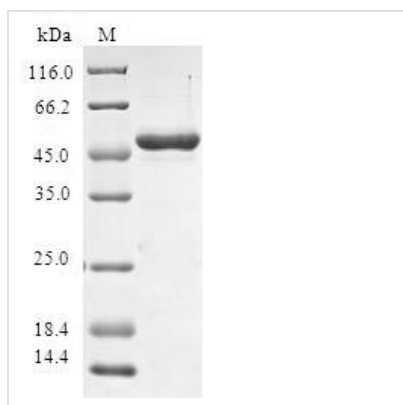




Recombinant Human Sperm-associated antigen 16 protein (SPAG16)

Product Code	CSB-EP818674HU
Relevance	Necessary for sperm flagellar function. Plays a role in motile ciliogenesis. May help to recruit STK36 to the cilium or apical surface of the cell to initiate subsequent steps of construction of the central pair apparatus of motile cilia
Abbreviation	Recombinant Human SPAG16 protein
Storage	The shelf life is related to many factors, storage state, buffer ingredients, storage temperature and the stability of the protein itself. Generally, the shelf life of liquid form is 6 months at -20°C/-80°C. The shelf life of lyophilized form is 12 months at -20°C/-80°C.
Uniprot No.	Q8N0X2
Alias	Pf20 protein homolog
Product Type	Recombinant Protein
Immunogen Species	Homo sapiens (Human)
Purity	Greater than 90% as determined by SDS-PAGE.
Sequence	MAAQRGMPSSAVRVLEELGMLTAAGDARDTADAVAAEGAYYLEQVTITEA SEDDYEYEEIPDDNFSIPEGEEDLAKAIQMAQEQTDTTEILERKTVLPSKHAVP EVIEDFLCNFLIKMGMTRTLDCFQSEWYELIQKGVTELRTVGNVPDVYTQIMLL ENENKNLKKDLKHYKQAAEYVIF
Research Area	Neuroscience
Source	E.coli
Target Names	SPAG16
Protein Names	Recommended name: Sperm-associated antigen 16 protein Alternative name(s): Pf20 protein homolog
Expression Region	1-183aa
Notes	Repeated freezing and thawing is not recommended. Store working aliquots at 4°C for up to one week.
Tag Info	N-terminal GST-tagged
Mol. Weight	47.6kDa
Protein Length	Full Length of Isoform 4
Image	



(Tris-Glycine gel) Discontinuous SDS-PAGE (reduced) with 5% enrichment gel and 15% separation gel.

Reconstitution

We recommend that this vial be briefly centrifuged prior to opening to bring the contents to the bottom. Please reconstitute protein in deionized sterile water to a concentration of 0.1-1.0 mg/mL. We recommend to add 5-50% of glycerol (final concentration) and aliquot for long-term storage at -20°C/-80°C. Our default final concentration of glycerol is 50%. Customers could use it as reference.

Shelf Life

The shelf life is related to many factors, storage state, buffer ingredients, storage temperature and the stability of the protein itself. Generally, the shelf life of liquid form is 6 months at -20°C/-80°C. The shelf life of lyophilized form is 12 months at -20°C/-80°C.