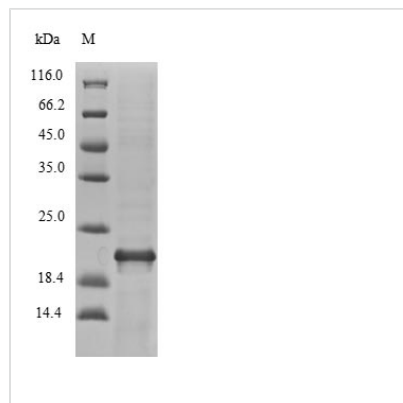




# Recombinant *Vibrio vulnificus* Fe/S biogenesis protein NfuA (nfuA)

<b>Product Code</b>	CSB-EP813457VFle1
<b>Relevance</b>	Involved in iron-sulfur cluster biogenesis. Binds a 4Fe-4S cluster, can transfer this cluster to apoproteins, and thereby intervenes in the maturation of Fe/S proteins. Could also act as a scaffold/chaperone for damaged Fe/S proteins.
<b>Abbreviation</b>	Recombinant <i>Vibrio vulnificus</i> nfuA protein
<b>Storage</b>	The shelf life is related to many factors, storage state, buffer ingredients, storage temperature and the stability of the protein itself. Generally, the shelf life of liquid form is 6 months at -20°C/-80°C. The shelf life of lyophilized form is 12 months at -20°C/-80°C.
<b>Uniprot No.</b>	Q8DDU2
<b>Product Type</b>	Recombinant Protein
<b>Immunogen Species</b>	<i>Vibrio vulnificus</i> (strain CMCP6)
<b>Purity</b>	Greater than 90% as determined by SDS-PAGE.
<b>Sequence</b>	MSNITITEAAQTHFANLLGQQPDGNTNIRVFVNPQTQNAECGVSYCPPEAVEA TDTEIPYQSFSAYVDELSLPFLEDAEIDYVTDKMGSQTLTKAPNAKMRKVADDA PLLERVEYAIQTQVNPQLAGHGGHVKLMEITDAGVAIVAFGGGCGNGCSMVDVT LKEGIEKELLQQFSGELTAVRDATEHDRGDHSYY
<b>Research Area</b>	Microbiology
<b>Source</b>	E.coli
<b>Target Names</b>	nfuA
<b>Expression Region</b>	1-194aa
<b>Notes</b>	Repeated freezing and thawing is not recommended. Store working aliquots at 4°C for up to one week.
<b>Tag Info</b>	Tag-Free
<b>Mol. Weight</b>	21.0kDa
<b>Protein Length</b>	Full Length

Image



(Tris-Glycine gel) Discontinuous SDS-PAGE (reduced) with 5% enrichment gel and 15% separation gel.

## Description

The first step in producing the recombinant *Vibrio vulnificus* (strain CMCP6) nfuA protein is to construct a plasmid that encodes the *Vibrio vulnificus* (strain CMCP6) nfuA protein (1-194aa). The next is to transform this plasmid into e.coli cells, select positive e.coli cells, from which positive cells can be screened and cultured to express the protein. The recombinant *Vibrio vulnificus* (strain CMCP6) nfuA protein is purified through affinity purification from the cell lysate. Its purity is greater than 90%, determined by the SDS-PAGE analysis.

## Reconstitution

We recommend that this vial be briefly centrifuged prior to opening to bring the contents to the bottom. Please reconstitute protein in deionized sterile water to a concentration of 0.1-1.0 mg/mL. We recommend to add 5-50% of glycerol (final concentration) and aliquot for long-term storage at -20°C/-80°C. Our default final concentration of glycerol is 50%. Customers could use it as reference.

## Shelf Life

The shelf life is related to many factors, storage state, buffer ingredients, storage temperature and the stability of the protein itself. Generally, the shelf life of liquid form is 6 months at -20°C/-80°C. The shelf life of lyophilized form is 12 months at -20°C/-80°C.