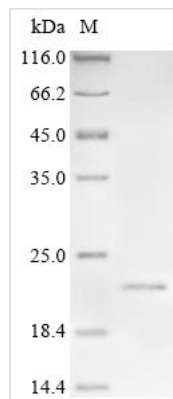




# Recombinant Human Signal peptide, CUB and EGF-like domain-containing protein 3 (SCUBE3), partial

<b>Product Code</b>	CSB-EP810287HU
<b>Abbreviation</b>	Recombinant Human SCUBE3 protein, partial
<b>Storage</b>	The shelf life is related to many factors, storage state, buffer ingredients, storage temperature and the stability of the protein itself. Generally, the shelf life of liquid form is 6 months at -20°C/-80°C. The shelf life of lyophilized form is 12 months at -20°C/-80°C.
<b>Uniprot No.</b>	Q8IX30
<b>Form</b>	Liquid or Lyophilized powder
<b>Storage Buffer</b>	If the delivery form is liquid, the default storage buffer is Tris/PBS-based buffer, 5%-50% glycerol. If the delivery form is lyophilized powder, the buffer before lyophilization is Tris/PBS-based buffer, 6% Trehalose.
<b>Product Type</b>	Recombinant Human Signal peptide, CUB and EGF-like domain-containing protein 3(SCUBE3),partial
<b>Immunogen Species</b>	Homo sapiens (Human)
<b>Sensitivity</b>	Not Test
<b>Purity</b>	Greater than 90% as determined by SDS-PAGE.
<b>Sequence</b>	CGGELGEFTGYIESPNYPGNYPAGVECIWNINPPPKRKILIVVPEIFLPSEDECG DVLVMRKNSSPSSITTYETCQTYERPIAFTARSRKLWINFKTSEANSARGFQIP YVTY
<b>Research Area</b>	Cardiovascular
<b>Source</b>	E.coli
<b>Target Names</b>	SCUBE3
<b>Expression Region</b>	804-916aa
<b>Notes</b>	Repeated freezing and thawing is not recommended. Store working aliquots at 4°C for up to one week.
<b>Tag Info</b>	N-terminal 10xHis-tagged and C-terminal Myc-tagged
<b>Mol. Weight</b>	20.2 kDa
<b>Protein Length</b>	Partial
<b>Image</b>	



(Tris-Glycine gel) Discontinuous SDS-PAGE (reduced) with 5% enrichment gel and 15% separation gel.

## Description

Amino acids 804-916 constitute the expression domain of recombinant Human SCUBE3. The expected molecular weight for the SCUBE3 protein is calculated to be 20.2 kDa. This protein is generated in a e.coli-based system. The SCUBE3 coding gene included the N-terminal 10xHis tag and C-terminal Myc tag, which simplifies the detection and purification processes of the recombinant SCUBE3 protein in following stages of expression and purification.

Signal peptide, CUB, and EGF-like domain-containing protein 3 (SCUBE3) contains a signal peptide for secretion, as well as CUB (Complement C1r/C1s, Uegf, Bmp1) and EGF-like domains, suggesting a role in cell adhesion and signaling. SCUBE3 has been implicated in angiogenesis, where it interacts with vascular endothelial growth factor (VEGF) and modulates VEGF-mediated signaling pathways. Additionally, it has been associated with platelet function, playing a role in platelet aggregation and adhesion.

## Reconstitution

We recommend that this vial be briefly centrifuged prior to opening to bring the contents to the bottom. Please reconstitute protein in deionized sterile water to a concentration of 0.1-1.0 mg/mL. We recommend to add 5-50% of glycerol (final concentration) and aliquot for long-term storage at -20°C/-80°C. Our default final concentration of glycerol is 50%. Customers could use it as reference.

## Shelf Life

The shelf life is related to many factors, storage state, buffer ingredients, storage temperature and the stability of the protein itself. Generally, the shelf life of liquid form is 6 months at -20°C/-80°C. The shelf life of lyophilized form is 12 months at -20°C/-80°C.