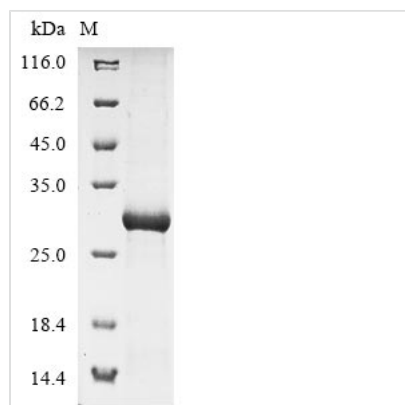




Recombinant Mouse C-type lectin domain family 4 member G (Clec4g), partial

Product Code	CSB-EP803912MO
Abbreviation	Recombinant Mouse Clec4g protein, partial
Storage	The shelf life is related to many factors, storage state, buffer ingredients, storage temperature and the stability of the protein itself. Generally, the shelf life of liquid form is 6 months at -20°C/-80°C. The shelf life of lyophilized form is 12 months at -20°C/-80°C.
Uniprot No.	Q8BNX1
Form	Liquid or Lyophilized powder
Storage Buffer	If the delivery form is liquid, the default storage buffer is Tris/PBS-based buffer, 5%-50% glycerol. If the delivery form is lyophilized powder, the buffer before lyophilization is Tris/PBS-based buffer, 6% Trehalose.
Product Type	Recombinant Protein
Immunogen Species	Mus musculus (Mouse)
Purity	Greater than 85% as determined by SDS-PAGE.
Sequence	LLSSASSKLRVLLSHQDLLRTNASEQKMTLSSSLKDDIGACRNCCSVTKAQLQT TLAEFKDIQAKLMEQESILKELQERVTDLAKASRDRENIRSELFQALEAVKRQ NSSCEQCPPSWLPFQGSCYYFSETQATWDTAQSYCGGQGAHLVIVRGLNEQ GFLSQHTRGRGYWLGLRAVRHLNKIQGYRWVDGASLNFSHWNSGEPNDSR GHEDCIMMLHSGWLWNDAPCTNERDGWICEKRSSCY
Research Area	Immunology
Source	E.coli
Target Names	Clec4g
Expression Region	52-294aa
Notes	Repeated freezing and thawing is not recommended. Store working aliquots at 4°C for up to one week.
Tag Info	N-terminal 6xHis-tagged
Mol. Weight	31.1 kDa
Protein Length	Partial
Image	



(Tris-Glycine gel) Discontinuous SDS-PAGE (reduced) with 5% enrichment gel and 15% separation gel.

Description

The region for expressing recombinant Mouse Clec4g contains amino acids 52-294. The theoretical molecular weight of the Clec4g protein is 31.1 kDa. This Clec4g recombinant protein is manufactured in e.coli. The Clec4g gene fragment has been modified by fusing the N-terminal 6xHis tag, providing convenience in detecting and purifying the recombinant Clec4g protein during the following stages.

The mouse C-type lectin domain family 4 member G (Clec4g) is a transmembrane protein that belongs to the C-type lectin superfamily. It is predominantly expressed in immune cells, such as macrophages and dendritic cells. Clec4g plays a role in the recognition of pathogen-associated molecular patterns (PAMPs) and endogenous ligands. Through its carbohydrate recognition domain (CRD), Clec4g can interact with various glycan structures, contributing to innate immune responses. The activation of Clec4g is associated with the induction of pro-inflammatory cytokines and modulation of immune cell functions. Studying Clec4g aids in understanding innate immunity and the molecular mechanisms involved in pathogen recognition, providing potential targets for therapeutic interventions.

Reconstitution

We recommend that this vial be briefly centrifuged prior to opening to bring the contents to the bottom. Please reconstitute protein in deionized sterile water to a concentration of 0.1-1.0 mg/mL. We recommend to add 5-50% of glycerol (final concentration) and aliquot for long-term storage at -20°C/-80°C. Our default final concentration of glycerol is 50%. Customers could use it as reference.

Shelf Life

The shelf life is related to many factors, storage state, buffer ingredients, storage temperature and the stability of the protein itself. Generally, the shelf life of liquid form is 6 months at -20°C/-80°C. The shelf life of lyophilized form is 12 months at -20°C/-80°C.