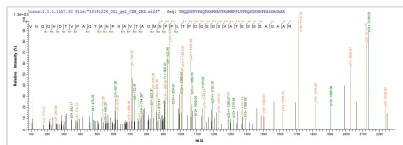


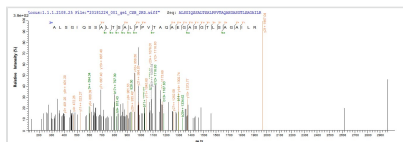


# Recombinant Pseudomonas syringae pv. tomato Effector protein hopM1 (hopM1)

<b>Product Code</b>	CSB-EP803414FGP(A4)
<b>Abbreviation</b>	Recombinant Pseudomonas syringae pv. tomato hopM1 protein
<b>Storage</b>	The shelf life is related to many factors, storage state, buffer ingredients, storage temperature and the stability of the protein itself. Generally, the shelf life of liquid form is 6 months at -20°C/-80°C. The shelf life of lyophilized form is 12 months at -20°C/-80°C.
<b>Uniprot No.</b>	Q887D0
<b>Storage Buffer</b>	Tris-based buffer, 50% glycerol
<b>Product Type</b>	Recombinant Protein
<b>Immunogen Species</b>	Pseudomonas syringae pv. tomato (strain ATCC BAA-871 / DC3000)
<b>Purity</b>	Greater than 90% as determined by SDS-PAGE.
<b>Sequence</b>	<p> MISSRIGGAGGVELSRVNQQHDTVPAQTAHPNAVTAGMNPPLTPDQSGSHAT  ESSSAGAARLNVAARHTQLLQAFKAEHGTAPVSGAPMISSRAALLIGSLLQAEP  LPFEVMAEKLSPERYQLKQFQGSDDLQQRLEKFAQPGQIPDKAEVVGQLIKGFAQ  SVADQLEHFQLMHDASPATVGGHAKADKATLAVSQTALGEYAGRASKAIGEG  LSNSIASLDEHISALDLTLQDAEQGNKESLHADRQALVDAKTTLVGLHADFPVKS  PEAKRLASVAAHTQLDNVVSDDLVTARNTVGGWKGAGPIVAAAVPQFLSSMTH  LGYVRLSTSDKLRDTIPETSSDANMLKASIIIGMVAGIAHETVNSVVKPMFQAAL  QKTGLNERLNMVPMKAVDTNTVIPDPFELKSEHGELVKKTPEEVAQDKAFVKS  ERALLNQKKVQGSSTHPVGELMAYSAFGGSQAVRQMLNDVHQINGQTL SAR  ALASGFGGAVSASSQTLLQLKSNYVDPQGRKIPVFTPDRAESDLKKDLLKGMD  LREPSVRTTFYSKALSGIQSSALTSALPPVTAQAEGASGTL SAGAILRNMALAA  TGSVSYLSTLYTNQSVTAEAKALKAAGMGGATPMLDRTETALNNIRHPNRESL  PHTFQKSTLSGIPRVAENAYHMGREGALQLPTQMAVDTVRVVDEGV LNAVASA  REALKQPTKDDDALRALEEGLLDPR </p>
<b>Research Area</b>	Others
<b>Source</b>	E.coli
<b>Target Names</b>	hopM1
<b>Expression Region</b>	1-712aa
<b>Notes</b>	Repeated freezing and thawing is not recommended. Store working aliquots at 4°C for up to one week.
<b>Tag Info</b>	N-terminal 10xHis-tagged
<b>Mol. Weight</b>	81.3 kDa
<b>Protein Length</b>	Full Length
<b>Image</b>	



Based on the SEQUEST from database of E.coli host and target protein, the LC-MS/MS Analysis result of CSB-EP803414FGP(A4) could indicate that this peptide derived from E.coli-expressed *Pseudomonas syringae* pv. tomato (strain ATCC BAA-871 / DC3000) hopM1.



Based on the SEQUEST from database of E.coli host and target protein, the LC-MS/MS Analysis result of CSB-EP803414FGP(A4) could indicate that this peptide derived from E.coli-expressed *Pseudomonas syringae* pv. tomato (strain ATCC BAA-871 / DC3000) hopM1.

## Reconstitution

We recommend that this vial be briefly centrifuged prior to opening to bring the contents to the bottom. Please reconstitute protein in deionized sterile water to a concentration of 0.1-1.0 mg/mL. We recommend to add 5-50% of glycerol (final concentration) and aliquot for long-term storage at -20°C/-80°C. Our default final concentration of glycerol is 50%. Customers could use it as reference.

## Shelf Life

The shelf life is related to many factors, storage state, buffer ingredients, storage temperature and the stability of the protein itself. Generally, the shelf life of liquid form is 6 months at -20°C/-80°C. The shelf life of lyophilized form is 12 months at -20°C/-80°C.