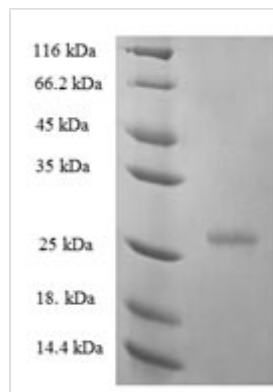




Recombinant Human Interferon epsilon (IFNE)

Product Code	CSB-EP803137HU
Relevance	Type I interferon required for maintaining basal levels of IFN-regulated genes, including 2'-5'-oligoadenylate synthetase, IRF7 and ISG15, in the male reproductive tract. Directly mediates protection against viral and bacterial genital infections .
Abbreviation	Recombinant Human IFNE protein
Storage	The shelf life is related to many factors, storage state, buffer ingredients, storage temperature and the stability of the protein itself. Generally, the shelf life of liquid form is 6 months at -20°C/-80°C. The shelf life of lyophilized form is 12 months at -20°C/-80°C.
Uniprot No.	Q86WN2
Alias	Interferon epsilon-1
Product Type	Recombinant Protein
Immunogen Species	Homo sapiens (Human)
Purity	Greater than 90% as determined by SDS-PAGE.
Sequence	LDLKLIFQQRQVNVQESLKLLNKLQTLISIQQCLPHRKNFLLPQKSLSPQQYQKG HTLAILHEMLQQIFSLFRANISLDGWEENHTEKFLIQLHQQLEYLEALMGLEAEK LSGTLGSDNLRRLQVKMYFRRIDYLENQDYSTCAWAIVQVEISRCLFFVFSLTE KLSKQGRPLNDMKQELTTEFRSPR
Research Area	Immunology
Source	E.coli
Target Names	IFNE
Expression Region	22-208aa
Notes	Repeated freezing and thawing is not recommended. Store working aliquots at 4°C for up to one week.
Tag Info	N-terminal 6xHis-tagged
Mol. Weight	26.1kDa
Protein Length	Full Length of Mature Protein
Image	



(Tris-Glycine gel) Discontinuous SDS-PAGE (reduced) with 5% enrichment gel and 15% separation gel.

Description

The recombinant human IFNE protein is encoded by a recombinant DNA that was cloned into the expression vector and then transformed into the E.coli that supports the expression of the gene. The recombinant DNA was constructed by fusing the N-terminal 6xHis tag gene to the gene fragment coding for the 22-208aa of the human IFNE protein. After purification, the product is the recombinant human IFNE protein. This recombinant IFNE protein was subjected to the SDS-PAGE determination. Its purity reaches over 90% evaluated by BandsScan software analysis combined with SAS-PAGE. This IFNE protein ran to the molecular weight of about 28 kDa under SDS-PAGE condition. It may have applications in immunology research.

IFNE belongs to the alpha/beta interferon family. Interferon epsilon-1 (IFNE) is mainly found in endometrial epithelial cells. Interferon epsilon-1 has been found to be related to pathway RIG-I/MDA5. IFNE directly mediates protection against viral and bacterial genital infections. Further researches suggested that IFNE could prevent HIV infection in macrophages through a type I IFN independent mechanism. Certain findings suggested that the pathway dysregulation was consistent with SARS-CoV-2 infection of an organism lacking IFNE.

Reconstitution

We recommend that this vial be briefly centrifuged prior to opening to bring the contents to the bottom. Please reconstitute protein in deionized sterile water to a concentration of 0.1-1.0 mg/mL. We recommend to add 5-50% of glycerol (final concentration) and aliquot for long-term storage at -20°C/-80°C. Our default final concentration of glycerol is 50%. Customers could use it as reference.

Shelf Life

The shelf life is related to many factors, storage state, buffer ingredients, storage temperature and the stability of the protein itself. Generally, the shelf life of liquid form is 6 months at -20°C/-80°C. The shelf life of lyophilized form is 12 months at -20°C/-80°C.