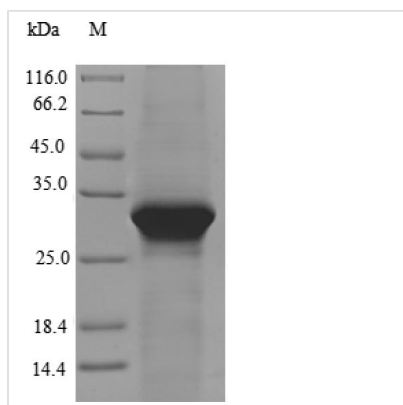


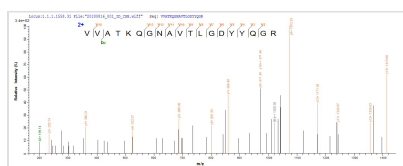


Recombinant Human Lipolysis-stimulated lipoprotein receptor (LSR), partial

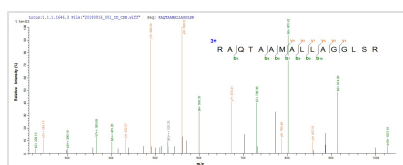
Product Code	CSB-EP801252HU
Relevance	Probable role in the clearance of triglyceride-rich lipoprotein from blood. Binds chylomicrons, LDL and VLDL in presence of free fatty acids and allows their subsequent uptake in the cells (By similarity)
Abbreviation	Recombinant Human LSR protein, partial
Storage	The shelf life is related to many factors, storage state, buffer ingredients, storage temperature and the stability of the protein itself. Generally, the shelf life of liquid form is 6 months at -20°C/-80°C. The shelf life of lyophilized form is 12 months at -20°C/-80°C.
Uniprot No.	Q86X29
Product Type	Recombinant Protein
Immunogen Species	Homo sapiens (Human)
Purity	Greater than 90% as determined by SDS-PAGE.
Sequence	MQQDGLGVGTRNGSGKGRSVHPSWPWCAPRPLRYFGRDARARRAQTAAM ALLAGGLSRGLGSHPAAGRDAVVFVWLLSTWCTAPARAIQVTVSNPYHVVI LFQPVTLPTCYQMTSTPTQPIVIWKYKSFCRDRIADAFSPASVDNQLNAQLAAG NPGYNPYVEQCDSVRTVRVVATKQGNAVTLGDYYQGRRITITGNADLTFDQT AWGDSGVYYCSVSAQDLQGNNEAYAEILVLGRTSGVAELLPGFQAGPIED
Research Area	Signal Transduction
Source	E.coli
Target Names	LSR
Expression Region	1-259aa
Notes	Repeated freezing and thawing is not recommended. Store working aliquots at 4°C for up to one week.
Tag Info	N-terminal 6xHis-tagged
Mol. Weight	31.9kDa
Protein Length	Partial
Image	



(Tris-Glycine gel) Discontinuous SDS-PAGE (reduced) with 5% enrichment gel and 15% separation gel.



Based on the SEQUEST from database of E.coli host and target protein, the LC-MS/MS Analysis result of CSB-EP801252HU could indicate that this peptide derived from E.coli-expressed Homo sapiens (Human) LSR.



Based on the SEQUEST from database of E.coli host and target protein, the LC-MS/MS Analysis result of CSB-EP801252HU could indicate that this peptide derived from E.coli-expressed Homo sapiens (Human) LSR.

Description

The first step in producing the recombinant Human LSR protein is to construct a plasmid that encodes the Human LSR protein (1-259aa). The next is to transform this plasmid into e.coli cells, select positive e.coli cells, from which positive cells can be screened and cultured to express the protein. A N-terminal 6xHis tag is fused to the protein. The recombinant Human LSR protein is purified through affinity purification from the cell lysate. Its purity is greater than 90%, determined by the SDS-PAGE analysis.

Reconstitution

We recommend that this vial be briefly centrifuged prior to opening to bring the contents to the bottom. Please reconstitute protein in deionized sterile water to a concentration of 0.1-1.0 mg/mL. We recommend to add 5-50% of glycerol (final concentration) and aliquot for long-term storage at -20°C/-80°C. Our default final concentration of glycerol is 50%. Customers could use it as reference.

Shelf Life

The shelf life is related to many factors, storage state, buffer ingredients, storage temperature and the stability of the protein itself. Generally, the shelf life of liquid form is 6 months at -20°C/-80°C. The shelf life of lyophilized form is 12 months at -20°C/-80°C.