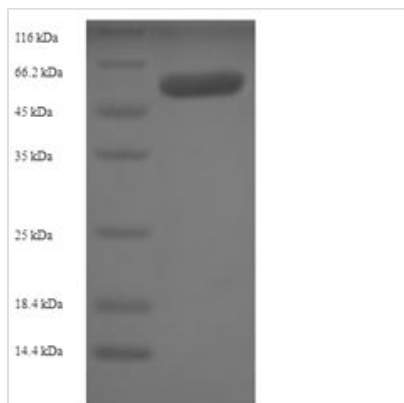




Recombinant Human Src kinase-associated phosphoprotein 1 (SKAP1)

Product Code	CSB-EP769799HU
Relevance	Positively regulates T-cell receptor signaling by enhancing the MAP kinase pathway. Required for optimal conjugation between T-cells and antigen-presenting cells by promoting the clustering of integrin ITGAL on the surface of T-cells. May be involved in high affinity immunoglobulin epsilon receptor signaling in mast cells.
Abbreviation	Recombinant Human SKAP1 protein
Storage	The shelf life is related to many factors, storage state, buffer ingredients, storage temperature and the stability of the protein itself. Generally, the shelf life of liquid form is 6 months at -20°C/-80°C. The shelf life of lyophilized form is 12 months at -20°C/-80°C.
Uniprot No.	Q86WV1
Alias	Src family-associated phosphoprotein 1Src kinase-associated phosphoprotein of 55 kDa ;SKAP-55 ;pp55
Product Type	Recombinant Protein
Immunogen Species	Homo sapiens (Human)
Purity	Greater than 90% as determined by SDS-PAGE.
Sequence	MQAAALPEEIRWLLEDAEEFLAEGLRNENLSAVARDHRDHILRGFQQIKARYY WDFQPQGGDIGQDSSDDNHSGTLGLSLTSDAPFLSDYQDEGMEDIVKGAQEL DNVIKQGYLEKKSKDHSFFGSEWQKRWCVVSRLFYFYYANEKSKQPKGTFLI KGYGVRMAPHLRRDSKKESCFELTSQDRRSYEFTATSPAARDWVDQISFLL KDLSSLTIPYEEDEEEEEKEETYDDIDGFDSPSCGSQCRPTILPGSVGIKEPTEE KEEEDIYEVLPDEEHDLEEDESGTRRKGVYASYQQGLWDCHGDQPDELSFQ RGDLIRILSKEYNMYGWWVGELNSLVGIVPKEYLTAFEVEE
Research Area	Immunology
Source	E.coli
Target Names	SKAP1
Expression Region	1-358aa
Notes	Repeated freezing and thawing is not recommended. Store working aliquots at 4°C for up to one week.
Tag Info	N-terminal 6xHis-SUMO-tagged
Mol. Weight	57.3kDa
Protein Length	Full Length
Image	



(Tris-Glycine gel) Discontinuous SDS-PAGE (reduced) with 5% enrichment gel and 15% separation gel.

Reconstitution

We recommend that this vial be briefly centrifuged prior to opening to bring the contents to the bottom. Please reconstitute protein in deionized sterile water to a concentration of 0.1-1.0 mg/mL. We recommend to add 5-50% of glycerol (final concentration) and aliquot for long-term storage at -20°C/-80°C. Our default final concentration of glycerol is 50%. Customers could use it as reference.

Shelf Life

The shelf life is related to many factors, storage state, buffer ingredients, storage temperature and the stability of the protein itself. Generally, the shelf life of liquid form is 6 months at -20°C/-80°C. The shelf life of lyophilized form is 12 months at -20°C/-80°C.