



Recombinant Enterococcus faecalis Gelatinase (gelE)

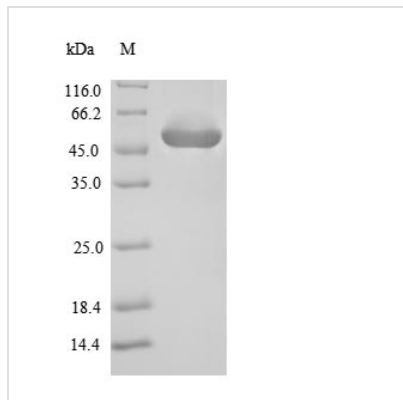
Product Code	CSB-EP769310ELW
Relevance	Metalloprotease capable of the hydrolysis of insoluble hydrophobic substrates. Hydrolyzes azocoll and gelatin and, at a lower rate, soluble and insoluble collagens. Does not cleave short synthetic peptides. Preferentially hydrolyzes the 24-Phe- -Phe-25 bond in the insulin B-chain, followed by the 5-His- -Leu-6 bond. Inactivates endothelin-1, primarily by cleavage of the 5-Ser- -Leu-6 and 16-His- -Leu-17 bonds. Hydrolyzes the alpha chain of C3 to generate a C3b-like protein. Inhibits complement-mediated hemolysis and opsinization of bacteria. Hydrolyzes the insect antimicrobial peptide cecropin. Decreases the length of E.faecalis chains via the activation of autolysin. Degrades polymerized fibrin.
Abbreviation	Recombinant Enterococcus faecalis gelE protein
Storage	The shelf life is related to many factors, storage state, buffer ingredients, storage temperature and the stability of the protein itself. Generally, the shelf life of liquid form is 6 months at -20°C/-80°C. The shelf life of lyophilized form is 12 months at -20°C/-80°C.
Uniprot No.	Q833V7
Product Type	Recombinant Proteins
Immunogen Species	Enterococcus faecalis (strain ATCC 700802 / V583)
Purity	Greater than 90% as determined by SDS-PAGE.
Sequence	VGSEVTLKNSFQVAFNVPVEKSNTGIALHGTDNTGVYHAVVDGKNNYSIIQAP SLVALNQNAVDAYTHGKFVKTYIEDHFQRHSIDDRGMPILSVVDEQHPDAYD NAFWDGKAMRYGETSTPTGKTYASSLDVVGHEMTHGVTEHTAGLEYLGQSG ALNESYSDLMGYIISGASNPEIGADTQSVDRKTGIRNLQTPSKHGQPETMAQY DDRARYKGTPTYDQGGVHYNSGIINRIGYTIIQNLGIEKAQTIFYSSLVNYLTPK AQFSDARDAMLAAAKVQYGDEAASVVSAAFNSAGIGAKEDIQVNQPSESVLV NE
Research Area	Others
Source	E.coli
Target Names	gelE
Protein Names	Recommended name: Gelatinase EC= 3.4.24.30Alternative name(s): Coccolysin
Expression Region	193-510aa
Notes	Repeated freezing and thawing is not recommended. Store working aliquots at 4°C for up to one week.
Tag Info	N-terminal 6xHis-SUMO-tagged
Mol. Weight	47.5 kDa



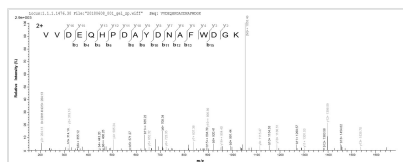
Protein Length

Full Length of Mature Protein

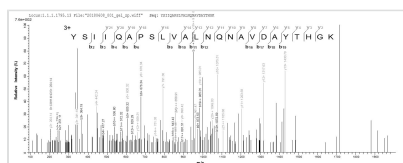
Image



(Tris-Glycine gel) Discontinuous SDS-PAGE (reduced) with 5% enrichment gel and 15% separation gel.



Based on the SEQUEST from database of E.coli host and target protein, the LC-MS/MS Analysis result of CSB-EP769310ELW could indicate that this peptide derived from E.coli-expressed Enterococcus faecalis (strain ATCC 700802 / V583) gelE.



Based on the SEQUEST from database of E.coli host and target protein, the LC-MS/MS Analysis result of CSB-EP769310ELW could indicate that this peptide derived from E.coli-expressed Enterococcus faecalis (strain ATCC 700802 / V583) gelE.

Shelf Life

The shelf life is related to many factors, storage state, buffer ingredients, storage temperature and the stability of the protein itself.

Generally, the shelf life of liquid form is 6 months at -20°C/-80°C. The shelf life of lyophilized form is 12 months at -20°C/-80°C.