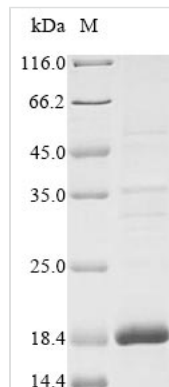




# Recombinant Human Insulin growth factor-like family member 1 (IGFL1)

<b>Product Code</b>	CSB-EP764932HU
<b>Abbreviation</b>	Recombinant Human IGFL1 protein
<b>Storage</b>	The shelf life is related to many factors, storage state, buffer ingredients, storage temperature and the stability of the protein itself. Generally, the shelf life of liquid form is 6 months at -20°C/-80°C. The shelf life of lyophilized form is 12 months at -20°C/-80°C.
<b>Uniprot No.</b>	Q6UW32
<b>Product Type</b>	Recombinant Protein
<b>Immunogen Species</b>	Homo sapiens (Human)
<b>Purity</b>	Greater than 85% as determined by SDS-PAGE.
<b>Sequence</b>	APVAPMTPYLMCLCQPHKRCGDKFYDPLQHCCYDDAVVPLARTQTCGNCTFR VCFEQCCPWTFMVKLINQNCDSARTSDDRRCRSVS
<b>Research Area</b>	Others
<b>Source</b>	E.coli
<b>Target Names</b>	IGFL1
<b>Protein Names</b>	Recommended name: Insulin growth factor-like family member 1
<b>Expression Region</b>	25-110aa
<b>Notes</b>	Repeated freezing and thawing is not recommended. Store working aliquots at 4°C for up to one week.
<b>Tag Info</b>	N-terminal 10xHis-tagged and C-terminal Myc-tagged
<b>Mol. Weight</b>	16.8 kDa
<b>Protein Length</b>	Full Length of Mature Protein

## Image



(Tris-Glycine gel) Discontinuous SDS-PAGE (reduced) with 5% enrichment gel and 15% separation gel.

## Description

The N-terminal 10xHis tag and C-terminal Myc tag was fused to the gene



fragment corresponding to the 25-110aa of the human IGFL1 protein and then was cloned into an expression vector. The expression vector was transformed into the E.coli for expression. The generated product was purified and separated to obtain the recombinant human IGFL1 protein. Its purity is higher than 85%. This recombinant human IGFL1 protein showed an apparent molecular weight of about 19 kDa under SDS-PAGE condition.

IGFL1 is gene encoding protein named Insulin growth factor-like family member 1. This gene belongs to IGFL family which play critical roles in cellular energy metabolism and in growth and development, especially prenatal growth. The protein encoded by IGFL1 gene is synthesized as a precursor protein and is proteolytically cleaved to form a secreted mature peptide. This protein can be detected in ovary and spinal cord. Murine insulin growth factor-like (IGFL) and human IGFL1 proteins are induced in inflammatory skin conditions and bind to a novel tumor necrosis factor receptor family member (IGFLR1).

---

**Reconstitution**

We recommend that this vial be briefly centrifuged prior to opening to bring the contents to the bottom. Please reconstitute protein in deionized sterile water to a concentration of 0.1-1.0 mg/mL. We recommend to add 5-50% of glycerol (final concentration) and aliquot for long-term storage at -20°C/-80°C. Our default final concentration of glycerol is 50%. Customers could use it as reference.

---

**Shelf Life**

The shelf life is related to many factors, storage state, buffer ingredients, storage temperature and the stability of the protein itself. Generally, the shelf life of liquid form is 6 months at -20°C/-80°C. The shelf life of lyophilized form is 12 months at -20°C/-80°C.