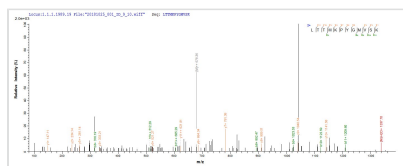




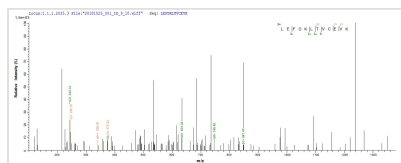
Recombinant Human metapneumovirus Matrix protein (M)

Product Code	CSB-EP761526HDAM
Abbreviation	Recombinant Human metapneumovirus Matrix protein
Storage	The shelf life is related to many factors, storage state, buffer ingredients, storage temperature and the stability of the protein itself. Generally, the shelf life of liquid form is 6 months at -20°C/-80°C. The shelf life of lyophilized form is 12 months at -20°C/-80°C.
Uniprot No.	Q6WB99
Storage Buffer	Tris-based buffer,50% glycerol
Product Type	Recombinant Protein
Immunogen Species	Human metapneumovirus (strain CAN97-83) (HMPV)
Purity	Greater than 85% as determined by SDS-PAGE.
Sequence	MESYLVDITYQGIPYTAAVQVDLVEKDLLPASLTIWFPLFQANTPPAVLLDQLKT LTITTLYAASQSGPILKVNASQAAMSVLPKKFEVNATVALDEYSKLEFDKLT CEVKTIVYLTMMKPYGMVSKFVSSAKPVGKKTHDLIALCDFMDLEKNTPVTIPAF IKSVSIKESATVEAAISSEADQALTQAKIAPYAGLIMIMTMNPNKGIFKKLGAG TQVIVELGAYVQAESISKICKTWSHQGTRYVLKSR
Research Area	Signal Transduction
Source	E.coli
Target Names	M
Protein Names	Recommended name: Matrix protein
Expression Region	1-254aa
Notes	Repeated freezing and thawing is not recommended. Store working aliquots at 4°C for up to one week.
Tag Info	N-terminal 10xHis-tagged and C-terminal Myc-tagged
Mol. Weight	35.1 kDa
Protein Length	Full Length

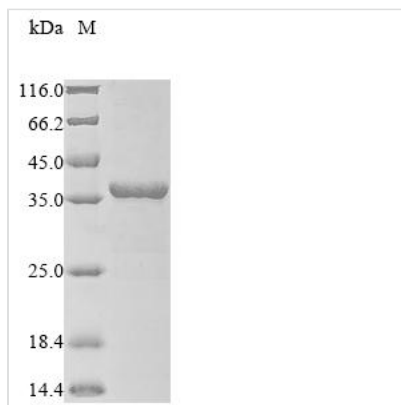
Image



Based on the SEQUEST from database of E.coli host and target protein, the LC-MS/MS Analysis result of CSB-EP761526HDAM could indicate that this peptide derived from E.coli-expressed Human metapneumovirus (strain CAN97-83) (HMPV) M.



Based on the SEQUEST from database of E.coli host and target protein, the LC-MS/MS Analysis result of CSB-EP761526HDAM could indicate that this peptide derived from E.coli-expressed Human metapneumovirus (strain CAN97-83) (HMPV) M.



(Tris-Glycine gel) Discontinuous SDS-PAGE (reduced) with 5% enrichment gel and 15% separation gel.

Reconstitution

We recommend that this vial be briefly centrifuged prior to opening to bring the contents to the bottom. Please reconstitute protein in deionized sterile water to a concentration of 0.1-1.0 mg/mL. We recommend to add 5-50% of glycerol (final concentration) and aliquot for long-term storage at -20°C/-80°C. Our default final concentration of glycerol is 50%. Customers could use it as reference.

Shelf Life

The shelf life is related to many factors, storage state, buffer ingredients, storage temperature and the stability of the protein itself. Generally, the shelf life of liquid form is 6 months at -20°C/-80°C. The shelf life of lyophilized form is 12 months at -20°C/-80°C.