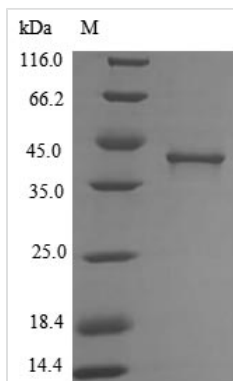




# Recombinant Bartonella henselae Lipoyl synthase (lipA)

<b>Product Code</b>	CSB-EP756700BSG
<b>Relevance</b>	Catalyzes the radical-mediated insertion of two sulfur atoms into the C-6 and C-8 positions of the octanoyl moiety bound to the lipoyl domains of lipoate-dependent enzymes, thereby converting the octanoylated domains into lipoylated derivatives.
<b>Abbreviation</b>	Recombinant Bartonella henselae lipA protein
<b>Storage</b>	The shelf life is related to many factors, storage state, buffer ingredients, storage temperature and the stability of the protein itself. Generally, the shelf life of liquid form is 6 months at -20°C/-80°C. The shelf life of lyophilized form is 12 months at -20°C/-80°C.
<b>Uniprot No.</b>	Q6G401
<b>Product Type</b>	Recombinant Protein
<b>Immunogen Species</b>	Bartonella henselae (strain ATCC 49882 / DSM 28221 / Houston 1) (Rochalimaea henselae)
<b>Purity</b>	Greater than 85% as determined by SDS-PAGE.
<b>Sequence</b>	MVTVVDRVTDRLRHPEKAHRPDTSVQKKPDWIRVKAPTSQVYKETHGIVRA HKLVTVC EEAGCPNIGECWSQRHASFMILGEICTRACAF CNVATGIPFAVDEN EPERVADAVARMELKHVVITSVDRDDLADGGAEHF AKVIYAIRRKAPKTTIEVLT PDFRHKDGALEIVVAAKPDVFHNHLETVPSKYLKVRPGARYFHSIRLLQRVKEL DPTIFTKSGIMVGLGEERNEILQLMDDLRSADVDFMTIGQYLQPTRKHHPVIRF VPPEEFESFAKIGKVKGFLHMASNPLTRSSHAGDDFAILQKARDEKFALQR
<b>Research Area</b>	others
<b>Source</b>	E.coli
<b>Target Names</b>	lipA
<b>Protein Names</b>	Lip-syn
<b>Expression Region</b>	1-320aa
<b>Notes</b>	Repeated freezing and thawing is not recommended. Store working aliquots at 4°C for up to one week.
<b>Tag Info</b>	N-terminal 6xHis-tagged
<b>Mol. Weight</b>	40.2 kDa
<b>Protein Length</b>	Full Length
<b>Image</b>	



(Tris-Glycine gel) Discontinuous SDS-PAGE (reduced) with 5% enrichment gel and 15% separation gel.

### Reconstitution

We recommend that this vial be briefly centrifuged prior to opening to bring the contents to the bottom. Please reconstitute protein in deionized sterile water to a concentration of 0.1-1.0 mg/mL. We recommend to add 5-50% of glycerol (final concentration) and aliquot for long-term storage at -20°C/-80°C. Our default final concentration of glycerol is 50%. Customers could use it as reference.

### Shelf Life

The shelf life is related to many factors, storage state, buffer ingredients, storage temperature and the stability of the protein itself. Generally, the shelf life of liquid form is 6 months at -20°C/-80°C. The shelf life of lyophilized form is 12 months at -20°C/-80°C.