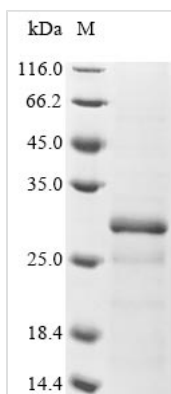




Recombinant Human Methyltransferase-like protein 7B (METTL7B)

Product Code	CSB-EP751014HU
Abbreviation	Recombinant Human METTL7B protein
Storage	The shelf life is related to many factors, storage state, buffer ingredients, storage temperature and the stability of the protein itself. Generally, the shelf life of liquid form is 6 months at -20°C/-80°C. The shelf life of lyophilized form is 12 months at -20°C/-80°C.
Uniprot No.	Q6UX53
Form	Liquid or Lyophilized powder
Storage Buffer	If the delivery form is liquid, the default storage buffer is Tris/PBS-based buffer, 5%-50% glycerol. If the delivery form is lyophilized powder, the buffer before lyophilization is Tris/PBS-based buffer, 6% Trehalose.
Product Type	Recombinant Protein
Immunogen Species	Homo sapiens (Human)
Purity	Greater than 85% as determined by SDS-PAGE.
Sequence	LLGCWQPLCKSYFPYLM AVLTPKSNRKMESKKRELFSQIKGLTGASGKVALLE LGCGTGANFQFYPPGCRVTCLDPNPHFEKFLTKSMAENRHLQYERFVVAPGE DMRQLADGSMDDVVVCTLVLCVQSPRKVLQEVRRVLRPGGVLFWEHVAEP YGSWAFMWQQVF EPTWKHIGDGCCLTRETWKDLENAQFSEIQMERQPPPLK WLPVGP HIMGKAVK
Research Area	Cell Biology
Source	E.coli
Target Names	METTL7B
Expression Region	24-244aa
Notes	Repeated freezing and thawing is not recommended. Store working aliquots at 4°C for up to one week.
Tag Info	N-terminal 6xHis-tagged
Mol. Weight	29.3 kDa
Protein Length	Full Length of Mature Protein
Image	



(Tris-Glycine gel) Discontinuous SDS-PAGE (reduced) with 5% enrichment gel and 15% separation gel.

Description

The recombinant Human METTL7B protein is made by following sequential steps: inserting a DNA fragment encoding the Human METTL7B protein (24-244aa) into a plasmid vector, transferring this vector into e.coli cells, selecting the positive cells, culturing positive cells, inducing the protein expression, and collecting the METTL7B protein. The protein features a N-terminal 6xHis tag fusion. The recombinant METTL7B protein is subjected to affinity purification and SDS-PAGE analysis. Its purity is over 85%.

Reconstitution

We recommend that this vial be briefly centrifuged prior to opening to bring the contents to the bottom. Please reconstitute protein in deionized sterile water to a concentration of 0.1-1.0 mg/mL. We recommend to add 5-50% of glycerol (final concentration) and aliquot for long-term storage at -20°C/-80°C. Our default final concentration of glycerol is 50%. Customers could use it as reference.

Shelf Life

The shelf life is related to many factors, storage state, buffer ingredients, storage temperature and the stability of the protein itself. Generally, the shelf life of liquid form is 6 months at -20°C/-80°C. The shelf life of lyophilized form is 12 months at -20°C/-80°C.