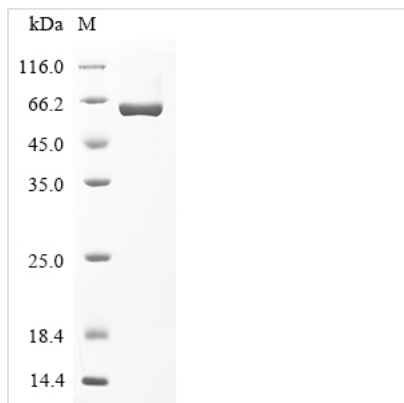




Recombinant Rat Glucose-6-phosphate isomerase (Gpi)

Product Code	CSB-EP744065RA
Abbreviation	Recombinant Rat Gpi protein
Storage	The shelf life is related to many factors, storage state, buffer ingredients, storage temperature and the stability of the protein itself. Generally, the shelf life of liquid form is 6 months at -20°C/-80°C. The shelf life of lyophilized form is 12 months at -20°C/-80°C.
Uniprot No.	Q6P6V0
Form	Liquid or Lyophilized powder
Storage Buffer	If the delivery form is liquid, the default storage buffer is Tris/PBS-based buffer, 5%-50% glycerol. If the delivery form is lyophilized powder, the buffer before lyophilization is Tris/PBS-based buffer, 6% Trehalose.
Product Type	Recombinant Protein
Immunogen Species	Rattus norvegicus (Rat)
Purity	Greater than 90% as determined by SDS-PAGE.
Sequence	AALTRNPEFQKLEWHRANSANLKLRELFADPERFNHFSLNLTNHHGILLD YSKNLVNKEVLHMLVDLAKSRGVEAARDNMFSGLKINSTEDRAVLHVALRNRS NRSIMMDGKDVMPEVNKVLDMKSFCQRVRSQDWKGYTGKAITDIINIGIGGS DLGPLMVTEALPKPYSKGGPRVWFVSNIDGTHIAKTLANLNPESSLFIIASKTFTT QETITNAETAKEWFLQAAKDPSAVAKHFVALSTNTDKVKEFGIDPKNMFEFWD WVGGRYSLWSAIGLSIALHVGFDHFEQLLSGAHWMDQHFMKTPLDKNAPVLL ALLGIWYINFYGCETHAMLPYDQYMHRFAAYFQQGDMESENGKYITKSGARVD YQTGPIVWGEPTNGQHAFYQLHQGTMIPCDFLIPVQTQHPINRGLHKKILL ANFLAQTEALMKGKSPEEARKEKQAAGKSPEELEKLLPHKVFEGNRPTNSIVF TKLTPFILGALIAMYEHKIFVQGIWDINSFDQWGVLELGGKQLAKKIEPELDGSSAV TSHDSSTNGLIGFIKLRDTKID
Research Area	Cancer
Source	E.coli
Target Names	Gpi
Expression Region	2-558aa
Notes	Repeated freezing and thawing is not recommended. Store working aliquots at 4°C for up to one week.
Tag Info	N-terminal 10xHis-tagged and C-terminal Myc-tagged
Mol. Weight	70.1 kDa
Protein Length	Full Length of Mature Protein
Image	



(Tris-Glycine gel) Discontinuous SDS-PAGE (reduced) with 5% enrichment gel and 15% separation gel.

Description

In order to obtain a recombinant rat glucose-6-phosphate isomerase (Gpi) protein, the full-length mature rat Gpi encoding gene fragment (amino acids 2-558) along with an N-terminal 10xHis-tag and C-terminal Myc-tag sequence is inserted into an appropriate expression vector. The constructed vector is then introduced into *E. coli* cells through transformation. Following the selection of the transformed cells, a large-scale culture is initiated to allow for optimal protein expression. The N-terminal 10xHis-tag and C-terminal Myc-tag facilitate the subsequent purification and detection of the recombinant Gpi protein. Once the cells are lysed, the recombinant Gpi protein is extracted and subjected to purification. The purity of the recombinant Gpi protein is assessed using SDS-PAGE analysis, confirming its purity level of up to 90%. On the gel, the recombinant protein is observed as a distinct band with an approximate molecular weight of 66 kDa.

Reconstitution

We recommend that this vial be briefly centrifuged prior to opening to bring the contents to the bottom. Please reconstitute protein in deionized sterile water to a concentration of 0.1-1.0 mg/mL. We recommend to add 5-50% of glycerol (final concentration) and aliquot for long-term storage at -20°C/-80°C. Our default final concentration of glycerol is 50%. Customers could use it as reference.

Shelf Life

The shelf life is related to many factors, storage state, buffer ingredients, storage temperature and the stability of the protein itself. Generally, the shelf life of liquid form is 6 months at -20°C/-80°C. The shelf life of lyophilized form is 12 months at -20°C/-80°C.