



Recombinant Human Beclin 1-associated autophagy-related key regulator (ATG14)

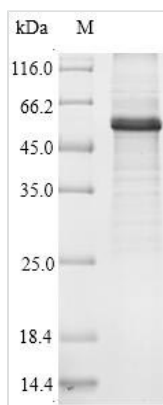
Product Code	CSB-EP741052HU
Relevance	Required for both basal and inducible autophagy. Determines the localization of the autophagy-specific PI3-kinase complex PI3KC3-C1 (PubMed:18843052, PubMed:19050071). Plays a role in autophagosome formation and MAP1LC3/LC3 conjugation to phosphatidylethanolamine (PubMed:19270696, PubMed:20713597). Promotes BECN1 translocation from the trans-Golgi network to autophagosomes (PubMed:20713597). Enhances PIK3C3 activity in a BECN1-dependent manner. Essential for the autophagy-dependent phosphorylation of BECN1 (PubMed:23878393). Stimulates the phosphorylation of BECN1, but suppresses the phosphorylation PIK3C3 by AMPK (PubMed:23878393). Binds to STX17-SNAP29 binary t-SNARE complex on autophagosomes and primes it for VAMP8 interaction to promote autophagosome-endolysosome fusion (PubMed:25686604). Modulates the hepatic lipid metabolism (By similarity).
Abbreviation	Recombinant Human ATG14 protein
Storage	The shelf life is related to many factors, storage state, buffer ingredients, storage temperature and the stability of the protein itself. Generally, the shelf life of liquid form is 6 months at -20°C/-80°C. The shelf life of lyophilized form is 12 months at -20°C/-80°C.
Uniprot No.	Q6ZNE5
Alias	Autophagy-related protein 14-like protein Short name:Atg14L
Product Type	Recombinant Protein
Immunogen Species	Homo sapiens (Human)
Purity	Greater than 90% as determined by SDS-PAGE.
Sequence	MASPSGKGARALEAPGCGPRPLARDLVDSVDDAEGLYVAVERCPLCNTTTRRR LTCAKCVQSGDFVYFDGRDRERFIDKKERLSRLKSKQEEFQKEVLKAMEGKWI TDQLRWKIMSKMREQLKQTICKGNEEMKENSEGLLKTKEKNQKLYSRAQR HQEKKEKIQRHNRKLGDLVEKKTIDLRSHYERLANLRRSHILELTSVIFPIEEVK GVRDPADVSSSESDSAMTSSTVSKLAEARRTTYLSGRWVCDDHNGDTSISITG PWISLPNNGDYSAYYSWVEEKTTQGPDMEQSNPAYTISAALCYATQLVNILS HILDVNLPKKLCNSEFCGENLSKQKFTRAVKKLNANILYLCFSQHVNLQDLQPL HTLRNLMYLVSPSSEHLGRSGPFVEVRADLEESMEFVDPGVAGESDESGDERV SDEETDLGTDWENLPSPRFCDIPSQSVEVSQSQSTQASPPPIASSSAGGMIS AASVTSWFKAYTGHR
Research Area	Others
Source	E.coli
Target Names	ATG14
Protein Names	Recommended name: Beclin 1-associated autophagy-related key regulator



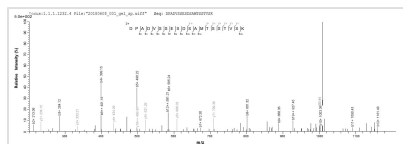
Short name= Barkor Alternative name(s): Autophagy-related protein 14-like protein Short name= Atg14L

Expression Region	1-492aa
Notes	Repeated freezing and thawing is not recommended. Store working aliquots at 4°C for up to one week.
Tag Info	N-terminal 10xHis-tagged and C-terminal Myc-tagged
Mol. Weight	60.3kDa
Protein Length	Full Length

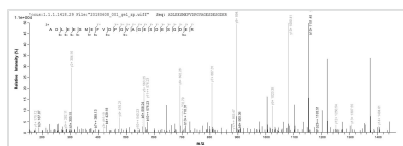
Image



(Tris-Glycine gel) Discontinuous SDS-PAGE (reduced) with 5% enrichment gel and 15% separation gel.



Based on the SEQUEST from database of E.coli host and target protein, the LC-MS/MS Analysis result of CSB-EP741052HU could indicate that this peptide derived from E.coli-expressed Homo sapiens (Human) ATG14.



Based on the SEQUEST from database of E.coli host and target protein, the LC-MS/MS Analysis result of CSB-EP741052HU could indicate that this peptide derived from E.coli-expressed Homo sapiens (Human) ATG14.

Reconstitution

We recommend that this vial be briefly centrifuged prior to opening to bring the contents to the bottom. Please reconstitute protein in deionized sterile water to a concentration of 0.1-1.0 mg/mL. We recommend to add 5-50% of glycerol (final concentration) and aliquot for long-term storage at -20°C/-80°C. Our default final concentration of glycerol is 50%. Customers could use it as reference.

Shelf Life

The shelf life is related to many factors, storage state, buffer ingredients, storage temperature and the stability of the protein itself. Generally, the shelf life of liquid form is 6 months at -20°C/-80°C. The shelf life of lyophilized form is 12 months at -20°C/-80°C.