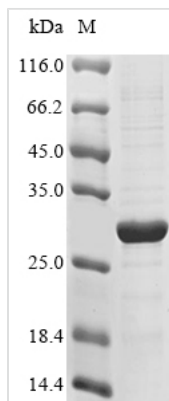




Recombinant Human Interleukin-20 receptor subunit beta (IL20RB), partial

Product Code	CSB-EP740921HU
Abbreviation	Recombinant Human IL20RB protein, partial
Storage	The shelf life is related to many factors, storage state, buffer ingredients, storage temperature and the stability of the protein itself. Generally, the shelf life of liquid form is 6 months at -20°C/-80°C. The shelf life of lyophilized form is 12 months at -20°C/-80°C.
Uniprot No.	Q6UXL0
Product Type	Recombinant Proteins
Immunogen Species	Homo sapiens (Human)
Purity	Greater than 85% as determined by SDS-PAGE.
Sequence	DEVAILPAPQNLSVLSTNMKHELLMWSPVIAPGETVYYYSVEYQGEYESLYTSHI WIPSSWCSLTEGPECDVTDDITATVPYNLRVRATLGSQTSAWSILKHPFNRS TILTRPGMEITKDGFLVIELEDLGPQFEFLVAYWRREPGAEHVKMVRSGGIP VHLETMEPGAAYCVKAQTFVKAIGRYSAFSQTECVEVQGEAIPL
Research Area	Cancer
Source	E.coli
Target Names	IL20RB
Protein Names	Recommended name: Interleukin-20 receptor subunit beta Short name= IL-20 receptor subunit beta Short name= IL-20R-beta Short name= IL-20RB Alternative name(s): IL-20R2
Expression Region	30-233aa
Notes	Repeated freezing and thawing is not recommended. Store working aliquots at 4°C for up to one week.
Tag Info	N-terminal 6xHis-tagged
Mol. Weight	26.9 kDa
Protein Length	Partial

Image



(Tris-Glycine gel) Discontinuous SDS-PAGE (reduced) with 5% enrichment gel and 15% separation gel.

Description

The first step in producing the recombinant Human IL20RB protein is to construct a plasmid that encodes the Human IL20RB protein (30-233aa). The next is to transform this plasmid into e.coli cells, select positive e.coli cells, from which positive cells can be screened and cultured to express the protein. A N-terminal 6xHis tag is fused to the protein. The recombinant Human IL20RB protein is purified through affinity purification from the cell lysate. Its purity is greater than 85%, determined by the SDS-PAGE analysis.

Shelf Life

The shelf life is related to many factors, storage state, buffer ingredients, storage temperature and the stability of the protein itself. Generally, the shelf life of liquid form is 6 months at -20°C/-80°C. The shelf life of lyophilized form is 12 months at -20°C/-80°C.