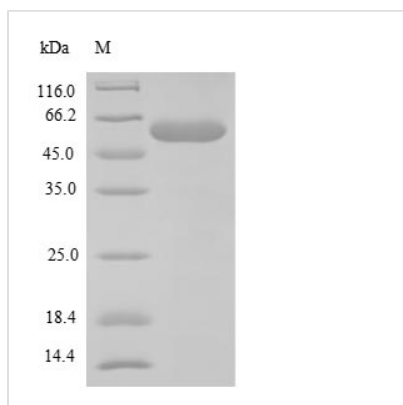




Recombinant Mouse F-box/WD repeat-containing protein 10 (Fbxw10), partial

Product Code	CSB-EP725549MO
Relevance	Probable substrate-recognition component of a SCF (SKP1-CUL1-F-box protein)-type E3 ubiquitin ligase complex which mediates the ubiquitination and subsequent proteasomal degradation of target proteins. Overexpression is leading to degradation of CBX5 and CBX1 (By similarity).
Abbreviation	Recombinant Mouse Fbxw10 protein, partial
Storage	The shelf life is related to many factors, storage state, buffer ingredients, storage temperature and the stability of the protein itself. Generally, the shelf life of liquid form is 6 months at -20°C/-80°C. The shelf life of lyophilized form is 12 months at -20°C/-80°C.
Uniprot No.	Q5SUS0
Alias	F-box and WD-40 domain-containing protein 10
Product Type	Recombinant Protein
Immunogen Species	Mus musculus (Mouse)
Purity	Greater than 90% as determined by SDS-PAGE.
Sequence	VKWQYSSDKNKVKKSKDKEEEREETSLGDEHSRSTIQGHSLKDSVSSKQEFKSRVHLKQTKNLSSDDMETPVGEVSHPLQKLWKVPMTDPDRFLLTISALQQAHNSEEFAYPHRPRPQVIDAWGPSIPYPRKVLSLKGKSVQHAVDQLRSSNLPTGV RQTNIPLEIQKLQPNLKKSLHSPRVQATVPQPSLIRPKVSDSLRGDEHLTSSIDG TMRRAGPLTSMQVIKPNRMLAPRGGTATLSPKKERPRFYTTLDPLRMNTGFM LMTVKEEKEFAEAKMKEYEASVSTKEVDPGKASKAAWIRIKGLPIDNFMKEG KTAAPELGQNVFI
Research Area	Others
Source	E.coli
Target Names	Fbxw10
Protein Names	Recommended name: F-box/WD repeat-containing protein 10 Alternative name(s): F-box and WD-40 domain-containing protein 10
Expression Region	701-1030aa
Notes	Repeated freezing and thawing is not recommended. Store working aliquots at 4°C for up to one week.
Tag Info	N-terminal 6xHis-SUMO-tagged
Mol. Weight	53.2kDa
Protein Length	Partial
Image	



(Tris-Glycine gel) Discontinuous SDS-PAGE (reduced) with 5% enrichment gel and 15% separation gel.

Reconstitution

We recommend that this vial be briefly centrifuged prior to opening to bring the contents to the bottom. Please reconstitute protein in deionized sterile water to a concentration of 0.1-1.0 mg/mL. We recommend to add 5-50% of glycerol (final concentration) and aliquot for long-term storage at -20°C/-80°C. Our default final concentration of glycerol is 50%. Customers could use it as reference.

Shelf Life

The shelf life is related to many factors, storage state, buffer ingredients, storage temperature and the stability of the protein itself. Generally, the shelf life of liquid form is 6 months at -20°C/-80°C. The shelf life of lyophilized form is 12 months at -20°C/-80°C.