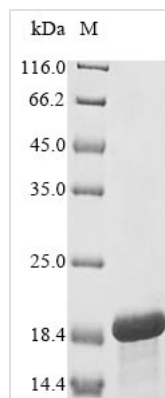




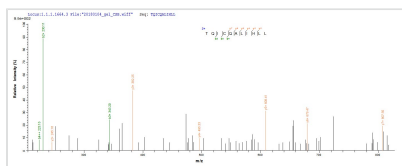
Recombinant Human HEAT repeat-containing protein 6 (HEATR6), partial

Product Code	CSB-EP721403HU
Relevance	Amplification-dependent oncogene.
Abbreviation	Recombinant Human HEATR6 protein, partial
Storage	The shelf life is related to many factors, storage state, buffer ingredients, storage temperature and the stability of the protein itself. Generally, the shelf life of liquid form is 6 months at -20°C/-80°C. The shelf life of lyophilized form is 12 months at -20°C/-80°C.
Uniprot No.	Q6AI08
Product Type	Recombinant Protein
Immunogen Species	Homo sapiens (Human)
Purity	Greater than 85% as determined by SDS-PAGE.
Sequence	KSEDTIDFLEFKYCVSLRTQICQALIHLLSLASASDLPCMKETLELSGNMVQSYI LQFLKSGAEGDDTGAPHSPQERDQMVRMALKHMGSIQAPTGDTARRAIMGFL EEILAVCFDSSGSQGAL
Research Area	Others
Source	E.coli
Target Names	HEATR6
Protein Names	Amplified in breast cancer protein 1 ABC1
Expression Region	1052-1175aa
Notes	Repeated freezing and thawing is not recommended. Store working aliquots at 4°C for up to one week.
Tag Info	N-terminal 10xHis-tagged and C-terminal Myc-tagged
Mol. Weight	18.5 kDa
Protein Length	Partial

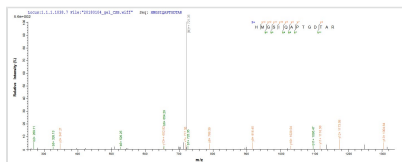
Image



(Tris-Glycine gel) Discontinuous SDS-PAGE (reduced) with 5% enrichment gel and 15% separation gel.



Based on the SEQUEST from database of E.coli host and target protein, the LC-MS/MS Analysis result of CSB-EP721403HU could indicate that this peptide derived from E.coli-expressed Homo sapiens (Human) HEATR6.



Based on the SEQUEST from database of E.coli host and target protein, the LC-MS/MS Analysis result of CSB-EP721403HU could indicate that this peptide derived from E.coli-expressed Homo sapiens (Human) HEATR6.

Reconstitution

We recommend that this vial be briefly centrifuged prior to opening to bring the contents to the bottom. Please reconstitute protein in deionized sterile water to a concentration of 0.1-1.0 mg/mL. We recommend to add 5-50% of glycerol (final concentration) and aliquot for long-term storage at -20°C/-80°C. Our default final concentration of glycerol is 50%. Customers could use it as reference.

Shelf Life

The shelf life is related to many factors, storage state, buffer ingredients, storage temperature and the stability of the protein itself. Generally, the shelf life of liquid form is 6 months at -20°C/-80°C. The shelf life of lyophilized form is 12 months at -20°C/-80°C.