



Recombinant Rat Calcium calmodulin-dependent 3,5 cyclic nucleotide phosphodiesterase 1C (Pde1c)

Product Code	CSB-EP720512RA
Abbreviation	Recombinant Rat Pde1c protein
Storage	The shelf life is related to many factors, storage state, buffer ingredients, storage temperature and the stability of the protein itself. Generally, the shelf life of liquid form is 6 months at -20°C/-80°C. The shelf life of lyophilized form is 12 months at -20°C/-80°C.
Uniprot No.	Q63421
Form	Liquid or Lyophilized powder
Storage Buffer	If the delivery form is liquid, the default storage buffer is Tris/PBS-based buffer, 5%-50% glycerol. If the delivery form is lyophilized powder, the buffer before lyophilization is Tris/PBS-based buffer, 6% Trehalose.
Product Type	Recombinant Protein
Immunogen Species	Rattus norvegicus (Rat)
Purity	Greater than 85% as determined by SDS-PAGE.
Sequence	<p>MTDTSHKKEGFKKCRSATFSIDGYSFTIVANEAGDKNARPLARFSRSKSNCL</p> <p>WNSLIDGLTGNVKEKPRPTIVQDTRPPEEILADELPQLDSPEALVKTSFRLRSL</p> <p>VKQLERGEASVVDLKKNLEYAATVLESVYIDETRRLDTEDELSDIQSDAVPSE</p> <p>VRDWLASTFTRQMGMMLRRSDEKPRFKSIVHAVQAGIFVERMYRRTSNMVGL</p> <p>SYPPAVIDALKDVDTSFDFSLNEASGDHALKFIFYELLTRYDLISRFKIPISAL</p> <p>VSFVEALEVGYSKHKNPYHNLMAADVTQTVHYLLYKTGVANWLTELEIFAIIF</p> <p>SAAIHDIYEHTGTTNNFHIQTRSDPAILYNDRSVLENHHLAAYRLLQEDEEMNI</p> <p>LVNLSKDDWREFRTLVIEMVMATDMSCHFQQIKAMKTALQQPEAIEKPKALS</p> <p>MLHTADISHPAKAWDLHHRWTMSLLEEFFRQGDREAEGLPFSPLCDRKSTM</p> <p>VAQSQVGFIQFIVEPTFTVLTDMTEKIVSPLIDETSQTGGTGQRRSSLNSINSSD</p> <p>AKRSGVKSSGSEGSAPINNSVIPVDYKSFKATWTEVVQINRERWRAKVPKEEK</p> <p>AKKEAEEKARLAAEEKQKEMEAKSQAEQGTTSKAEKKTSGETKGQVNGTRTS</p> <p>KGDNPRGKNSKGDKAGEKQNGDLKDGKNKADKKDHSNTGNESKKADGTK</p> <p>KRSHGSPAPSTSSTSRSLTPVIKPPLRHFKRPAYASSSYAPSVPKKTDHPVR</p> <p>YKMLDQRIKIKKIQNISHHWNKK</p>
Research Area	Signal Transduction
Source	E.coli
Target Names	Pde1c
Expression Region	1-768aa
Notes	Repeated freezing and thawing is not recommended. Store working aliquots at 4°C for up to one week.

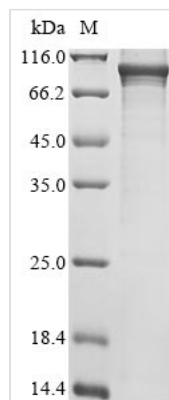


Tag Info N-terminal 6xHis-tagged

Mol. Weight 92.6 kDa

Protein Length Full Length

Image



(Tris-Glycine gel) Discontinuous SDS-PAGE (reduced) with 5% enrichment gel and 15% separation gel.

Description

Enrich your research in signal transduction with our high-quality Recombinant Rat Dual specificity calcium/calmodulin-dependent 3',5'-cyclic nucleotide phosphodiesterase 1C (Cam-PDE 1C). This product is derived from the 'Pde1c' gene of Rat species, functioning as a calcium-calmodulin-dependent enzyme involved in the regulation of cyclic nucleotide content and thus, affecting the cellular responses triggered by these signaling nucleotides.

Generated from E.coli, the protein replicates the full length, capturing all 768 amino acids of the native protein. To enhance its functionality, our recombinant protein is tagged with a N-terminal 6xHis tag for simplified purification and detection. Achieving a purity greater than 85% as validated by SDS-PAGE, our recombinant protein ensures reliable results. We offer the Recombinant Rat Cam-PDE 1C protein in two different forms - liquid or lyophilized powder, providing flexibility for your experimental setup.

Reconstitution

We recommend that this vial be briefly centrifuged prior to opening to bring the contents to the bottom. Please reconstitute protein in deionized sterile water to a concentration of 0.1-1.0 mg/mL. We recommend to add 5-50% of glycerol (final concentration) and aliquot for long-term storage at -20°C/-80°C. Our default final concentration of glycerol is 50%. Customers could use it as reference.

Shelf Life

The shelf life is related to many factors, storage state, buffer ingredients, storage temperature and the stability of the protein itself. Generally, the shelf life of liquid form is 6 months at -20°C/-80°C. The shelf life of lyophilized form is 12 months at -20°C/-80°C.