

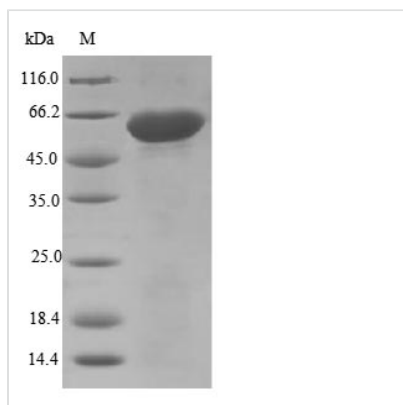


# Recombinant Mouse Disintegrin and metalloproteinase domain-containing protein 12 (Adam12), partial

<b>Product Code</b>	CSB-EP720263MO
<b>Relevance</b>	Involved in skeletal muscle regeneration, specifically at the onset of cell fusion. Also involved in macrophage-derived giant cells (MGC) and osteoclast formation from mononuclear precursors.
<b>Abbreviation</b>	Recombinant Mouse Adam12 protein, partial
<b>Storage</b>	The shelf life is related to many factors, storage state, buffer ingredients, storage temperature and the stability of the protein itself. Generally, the shelf life of liquid form is 6 months at -20°C/-80°C. The shelf life of lyophilized form is 12 months at -20°C/-80°C.
<b>Uniprot No.</b>	Q61824
<b>Product Type</b>	Recombinant Protein
<b>Immunogen Species</b>	Mus musculus (Mouse)
<b>Purity</b>	Greater than 85% as determined by SDS-PAGE.
<b>Sequence</b>	ETLKMTKYVELVIVADNREFQRQGDLEKVKQRLIEIANHVDKFYRPLNIRIVLV GVEVWNDIDKCSISQDPFTSLHEFLDWRKIKLLPRKSHDNAQLISGVYFQGTTI GMAPIMSMCTAEQSGGVMDHSDSPLGAAVTLAHELGHNFNGMNHDTLARGC SCRMMAEKGGCIMPSTGFPFPMVFSSCSRKDLEASLEKGMGMCLFNLPEVK QAFGGRKCGNGYVEEGEECDCEPEECTNRCCNATTCTLKPDVCAHGGC CEDCQLKPPGTACRGSSNSCDLPEFCTGTAPHCPANVYLHDGHPCQGVGDY CYNGICQTHEQQCVTLWGPGAKPAPGICFERVNSAGDPYGNCGKDSKSAFA KCELRDAKCGKIQCGGASRPVIGTNAVSIETNIPQQEGGRILCRGTHVYLG DMPDPLVLVAGTKCAEGKICLNRRQCNI SVFGVHKCAMQCHGRGVCNNRKN CHCEAHWAPPFCDFGFGGSTDSGPIRQADNQG
<b>Research Area</b>	Cancer
<b>Source</b>	E.coli
<b>Target Names</b>	Adam12
<b>Protein Names</b>	Meltrin-alpha ( ) Mltna
<b>Expression Region</b>	206-706aa
<b>Notes</b>	Repeated freezing and thawing is not recommended. Store working aliquots at 4°C for up to one week.
<b>Tag Info</b>	N-terminal 10xHis-tagged and C-terminal Myc-tagged
<b>Mol. Weight</b>	61.4 kDa
<b>Protein Length</b>	Partial



## Image



(Tris-Glycine gel) Discontinuous SDS-PAGE (reduced) with 5% enrichment gel and 15% separation gel.

## Reconstitution

We recommend that this vial be briefly centrifuged prior to opening to bring the contents to the bottom. Please reconstitute protein in deionized sterile water to a concentration of 0.1-1.0 mg/mL. We recommend to add 5-50% of glycerol (final concentration) and aliquot for long-term storage at -20°C/-80°C. Our default final concentration of glycerol is 50%. Customers could use it as reference.

## Shelf Life

The shelf life is related to many factors, storage state, buffer ingredients, storage temperature and the stability of the protein itself. Generally, the shelf life of liquid form is 6 months at -20°C/-80°C. The shelf life of lyophilized form is 12 months at -20°C/-80°C.