



Recombinant Rat CMRF35-like molecule 1 (Cd300lf), Partial

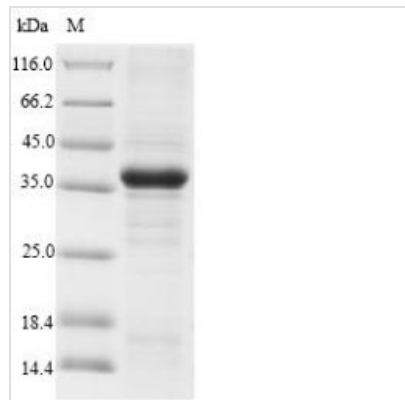
Product Code	CSB-EP707077RA
Relevance	Acts as an inhibitory receptor for myeloid cells and mast cells. Positively regulates the phagocytosis of apoptotic cells (efferocytosis) via phosphatidylserine (PS) recognition; recognizes and binds PS as a ligand which is expressed on the surface of apoptotic cells. Plays an important role in the maintenance of immune homeostasis, by promoting macrophage-mediated efferocytosis and by inhibiting dendritic cell-mediated efferocytosis. Negatively regulates Fc epsilon receptor-dependent mast cell activation and allergic responses via binding to ceramide and sphingomyelin which act as ligands. May act as a coreceptor for interleukin 4 (IL-4). Associates with and regulates IL-4 receptor alpha-mediated responses by augmenting IL-4- and IL-13-induced signaling. Negatively regulates the Toll-like receptor (TLR) signaling mediated by MYD88 and TRIF through activation of PTPN6/SHP-1 and PTPN11/SHP-2. Inhibits osteoclast formation. Induces macrophage cell death upon engagement.
Abbreviation	Recombinant Rat Cd300lf protein, partial
Storage	The shelf life is related to many factors, storage state, buffer ingredients, storage temperature and the stability of the protein itself. Generally, the shelf life of liquid form is 6 months at -20°C/-80°C. The shelf life of lyophilized form is 12 months at -20°C/-80°C.
Uniprot No.	Q566E6
Alias	CD300 antigen-like family member F CD_antigen: CD300f
Product Type	Recombinant Protein
Immunogen Species	Rattus norvegicus (Rat)
Purity	Greater than 90% as determined by SDS-PAGE.
Sequence	AQDPVTGP EEVSGYEQGS LTVWCRYG SSWKDY SKYWCRGPKRSSCEIRVE TDASERLVKENHVSIRDDQTNFTFTVTMEDLRMSDAGIYWCGITKAGYDHMFK VHVSINPVPTTPTTTSTTTIFTVTTTVKETSTLSTQTSHYSDNRYDSGGVGDGN GFLDLS
Research Area	others
Source	E.coli
Target Names	Cd300lf
Expression Region	19-181aa
Notes	Repeated freezing and thawing is not recommended. Store working aliquots at 4°C for up to one week.
Tag Info	N-terminal 10xHis-SUMO-tagged and C-terminal Myc-tagged
Mol. Weight	38.3kDa



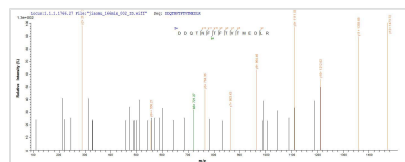
Protein Length

Extracellular Domain

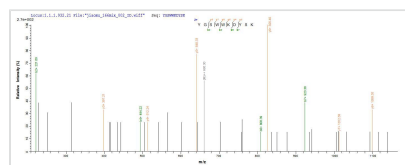
Image



(Tris-Glycine gel) Discontinuous SDS-PAGE (reduced) with 5% enrichment gel and 15% separation gel.



Based on the SEQUEST from database of E.coli host and target protein, the LC-MS/MS Analysis result of CSB-EP707077RA could indicate that this peptide derived from E.coli-expressed *Rattus norvegicus* (Rat) Cd300lf.



Based on the SEQUEST from database of E.coli host and target protein, the LC-MS/MS Analysis result of CSB-EP707077RA could indicate that this peptide derived from E.coli-expressed *Rattus norvegicus* (Rat) Cd300lf.

Description

Our Recombinant Rat CMRF35-like molecule 1 (CLM-1) is a product carefully crafted to enhance your research endeavors. The CD300f protein encoded by the 'Cd300lf' gene is a member of the CD300 antigen-like family, functioning as a crucial part of immune responses. Expressed from Rat species, this protein offers the opportunity to explore different facets of immunological research.

Our protein is obtained from E.coli, and is tailored to cover the extracellular domain with an expression region of 19-181 amino acids, capturing the key functional domains. To enhance its usability, our protein is labeled with a N-terminal 10xHis-SUMO tag and a C-terminal Myc tag, providing ease in purification and detection. With purity greater than 90% as determined by SDS-PAGE, you can be assured of the product's reliability. We offer the Recombinant Rat CD300f protein in two different formats - liquid or lyophilized powder, catering to diverse experimental conditions.

Reconstitution

We recommend that this vial be briefly centrifuged prior to opening to bring the contents to the bottom. Please reconstitute protein in deionized sterile water to a concentration of 0.1-1.0 mg/mL. We recommend to add 5-50% of glycerol (final concentration) and aliquot for long-term storage at -20°C/-80°C. Our default final concentration of glycerol is 50%. Customers could use it as reference.

Shelf Life

The shelf life is related to many factors, storage state, buffer ingredients, storage temperature and the stability of the protein itself. Generally, the shelf life of liquid form is 6 months at -20°C/-80°C. The shelf life



of lyophilized form is 12 months at -20°C/-80°C.