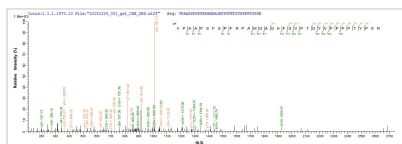


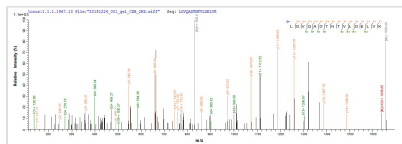


# Recombinant Mouse Endoribonuclease ZC3H12A (Zc3h12a)

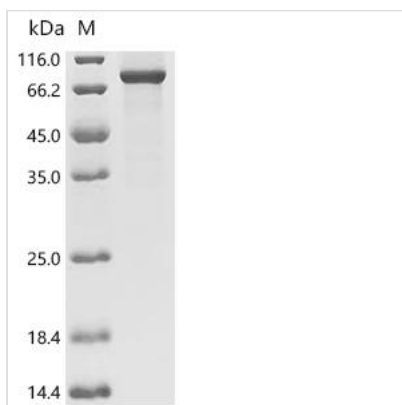
<b>Product Code</b>	CSB-EP704737MO
<b>Abbreviation</b>	Recombinant Mouse Zc3h12a protein
<b>Storage</b>	The shelf life is related to many factors, storage state, buffer ingredients, storage temperature and the stability of the protein itself. Generally, the shelf life of liquid form is 6 months at -20°C/-80°C. The shelf life of lyophilized form is 12 months at -20°C/-80°C.
<b>Uniprot No.</b>	Q5D1E7
<b>Storage Buffer</b>	Tris-based buffer, 50% glycerol
<b>Product Type</b>	Recombinant Protein
<b>Immunogen Species</b>	Mus musculus (Mouse)
<b>Purity</b>	Greater than 85% as determined by SDS-PAGE.
<b>Sequence</b>	MSDPCGTKPVQESNPTMSLWSLED RHSSQGR PQDPVAK EAPTSELQMK VDFFRKLGYSSEIHSVLQKLGVQADTNTVLGELVKHGSATERECQALTAPSP QPPLVPRGGSTPKPSTLEPSLPEEDREGSDLRPVVIDGSNVAMSHGNKEVFS CRGILLAVNWFLERGHDTITVFVPSWRKEQPRPDVPITDQHILRELEKKILVFT PSRRVGGKRVVCYDDR FIVKLAFESDGVVVSNDTYRDLQGERQEWKRFIEER LLMYSFVNDKFMPPDDPLGRHGPSLDNFLRKKPLPSEHRKQPCPYGKKCTYG IKCRFFHPERPSRPQRSVADEL RANALLSPPTPVKDKSSQRPSPASQSSSVS LEAEPGSLDGKKLGARSSPGPHREGSPQTCAPAGRSLPVSGGSFGPTEWLA HTQDSLPTYTSQECLDSGIGSLESQMSELWGV RGGSPGESGPTRGPYAGYHS YGSKVPAAPSFSPFRPAMGAGHFSVPTDYVPPPPTYP SREYWSEPYPLPPPT PVLQEPQRPSPGAGGGPWGRVGD LAKERAGVYTKLCGVFP PHLVEAVMRRF PQLLDPQQLAAEILSYKSQHLSE
<b>Research Area</b>	Cancer
<b>Source</b>	E.coli
<b>Target Names</b>	Zc3h12a
<b>Protein Names</b>	Recommended name: Ribonuclease ZC3H12A EC= 3.1.-.-Alternative name(s): MCP-induced protein 1 Zinc finger CCCH domain-containing protein 12A
<b>Expression Region</b>	1-596aa
<b>Notes</b>	Repeated freezing and thawing is not recommended. Store working aliquots at 4°C for up to one week.
<b>Tag Info</b>	N-terminal 10xHis-tagged and C-terminal Myc-tagged
<b>Mol. Weight</b>	73.0 kDa
<b>Protein Length</b>	Full Length
<b>Image</b>	



Based on the SEQUEST from database of E.coli host and target protein, the LC-MS/MS Analysis result of CSB-EP704737MO could indicate that this peptide derived from E.coli-expressed Mus musculus (Mouse) Zc3h12a.



Based on the SEQUEST from database of E.coli host and target protein, the LC-MS/MS Analysis result of CSB-EP704737MO could indicate that this peptide derived from E.coli-expressed Mus musculus (Mouse) Zc3h12a.



(Tris-Glycine gel) Discontinuous SDS-PAGE (reduced) with 5% enrichment gel and 15% separation gel.

## Reconstitution

We recommend that this vial be briefly centrifuged prior to opening to bring the contents to the bottom. Please reconstitute protein in deionized sterile water to a concentration of 0.1-1.0 mg/mL. We recommend to add 5-50% of glycerol (final concentration) and aliquot for long-term storage at -20°C/-80°C. Our default final concentration of glycerol is 50%. Customers could use it as reference.

## Shelf Life

The shelf life is related to many factors, storage state, buffer ingredients, storage temperature and the stability of the protein itself.

Generally, the shelf life of liquid form is 6 months at -20°C/-80°C. The shelf life of lyophilized form is 12 months at -20°C/-80°C.