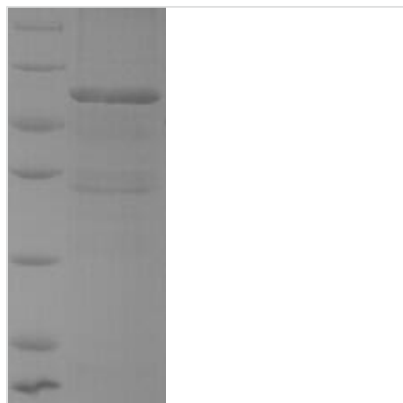


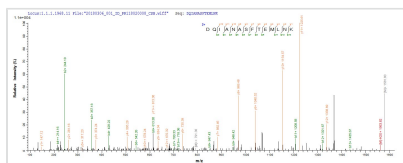


Recombinant Staphylococcus aureus Foldase protein PrsA (prsA)

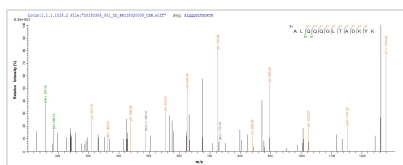
Product Code	CSB-EP702193FLB
Relevance	Plays a major role in protein secretion by helping the post-translocational Extracellular domain folding of several secreted proteins.
Abbreviation	Recombinant Staphylococcus aureus prsA protein
Storage	The shelf life is related to many factors, storage state, buffer ingredients, storage temperature and the stability of the protein itself. Generally, the shelf life of liquid form is 6 months at -20°C/-80°C. The shelf life of lyophilized form is 12 months at -20°C/-80°C.
Uniprot No.	Q5HET4
Product Type	Recombinant Protein
Immunogen Species	Staphylococcus aureus (strain COL)
Purity	Greater than 90% as determined by SDS-PAGE.
Sequence	CGASATDSKENTLISSKAGDVTVADTMKKIGKDQIANASFTEMLNKILADKYKN KVNDKKIDEQIEKMQKQYGGKDKFEKALQQQGLTADKYKENLRTAAYHKELLS DKIKISDSEIKEDSKKASHILIKVSKSKSDEGLDDKEAKQKAEEIQKEVSKDPSK FGEIAKKESMDTGSAKKDGEGLGYVLKGQTDKDFEKALFKLKDGEVSEVVKSSF GYHIIKADKPTDFNSEKQSLKEKLVDQKVQKNPKLLTDAYKDLLKEYDVDFKDR DIKSVVEDKILNPEKCLKQGGGAQGGQSGMSQ
Research Area	Microbiology
Source	E.coli
Target Names	prsA
Expression Region	21-320aa
Notes	Repeated freezing and thawing is not recommended. Store working aliquots at 4°C for up to one week.
Tag Info	N-terminal 6xHis-SUMO-tagged
Mol. Weight	49.6kDa
Protein Length	Full Length of Mature Protein
Image	



(Tris-Glycine gel) Discontinuous SDS-PAGE (reduced) with 5% enrichment gel and 15% separation gel.



Based on the SEQUEST from database of E.coli host and target protein, the LC-MS/MS Analysis result of CSB-EP702193FLB could indicate that this peptide derived from E.coli-expressed Staphylococcus aureus (strain COL) prsA.



Based on the SEQUEST from database of E.coli host and target protein, the LC-MS/MS Analysis result of CSB-EP702193FLB could indicate that this peptide derived from E.coli-expressed Staphylococcus aureus (strain COL) prsA.

Reconstitution

We recommend that this vial be briefly centrifuged prior to opening to bring the contents to the bottom. Please reconstitute protein in deionized sterile water to a concentration of 0.1-1.0 mg/mL. We recommend to add 5-50% of glycerol (final concentration) and aliquot for long-term storage at -20°C/-80°C. Our default final concentration of glycerol is 50%. Customers could use it as reference.

Shelf Life

The shelf life is related to many factors, storage state, buffer ingredients, storage temperature and the stability of the protein itself. Generally, the shelf life of liquid form is 6 months at -20°C/-80°C. The shelf life of lyophilized form is 12 months at -20°C/-80°C.