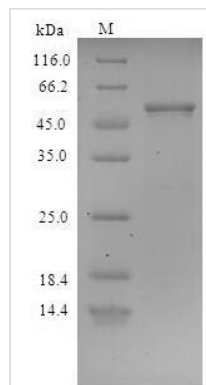




Recombinant Staphylococcus aureus Clumping factor A (clfA), partial

Product Code	CSB-EP692021FLB
Relevance	Cell surface-associated protein implicated in virulence. Promotes bacterial attachment exclusively to the gamma-chain of human fibrinogen. Induces formation of bacterial clumps (By similarity)
Abbreviation	Recombinant Staphylococcus aureus clfA protein, partial
Storage	The shelf life is related to many factors, storage state, buffer ingredients, storage temperature and the stability of the protein itself. Generally, the shelf life of liquid form is 6 months at -20°C/-80°C. The shelf life of lyophilized form is 12 months at -20°C/-80°C.
Uniprot No.	Q5HBM8
Alias	Fibrinogen receptor A Fibrinogen-binding protein A
Product Type	Recombinant Protein
Immunogen Species	Staphylococcus aureus (strain COL)
Purity	Greater than 90% as determined by SDS-PAGE.
Sequence	GTDITNQLTNVTVGIDSGTTVYPHQAGYVKLNYGFSVPNSAVKGDTFKITVPKE LNLNGVTSTAKVPPIMAGDQVLANGVIDSDGNVIYTFDYYVNTKDDVKATLTMP AYIDPENVKKTGNVTLATGIGSTTANKTVLVDYEKYGKFYNLSIKGTIDQIDKTN NTYRQTIYVNPSPGDNVIAPVLTGNLKPNTDSNALIDQQNTSIKVYKVDNAADLS ESYFVNPNFEDVTNSVNITFPNPNQYKVEFNTDQITTPYIVVNGHIDPNS KGDALRSTLYGYNNSNIWRSMSWDNEVAFNNGSGSGDGIDKPVVPEQPDEP GEIEPIPE
Research Area	Microbiology
Source	E.coli
Target Names	clfA
Protein Names	Recommended name: Clumping factor A Alternative name(s): Fibrinogen receptor A Fibrinogen-binding protein A
Expression Region	229-559aa
Notes	Repeated freezing and thawing is not recommended. Store working aliquots at 4°C for up to one week.
Tag Info	N-terminal 6xHis-SUMO-tagged
Mol. Weight	52.0kDa
Protein Length	Partial
Image	



(Tris-Glycine gel) Discontinuous SDS-PAGE (reduced) with 5% enrichment gel and 15% separation gel.

Description

Constructing a plasmid encoding the *Staphylococcus aureus* (strain COL) *clfA* protein (229-559aa) initiates the general approach for generating the recombinant *Staphylococcus aureus* (strain COL) *clfA* protein. Transformation of the plasmid into *e.coli* cells obtains the plasmid-containing *e.coli* cells, which are cultured and induced for protein expression. A N-terminal 6xHis-SUMO tag is fused to the protein. Subsequently, the protein is purified through affinity purification, and SDS-PAGE analysis is undertaken to confirm the presence and assess the purity of the protein. The protein's purity exceeds 90%.

Reconstitution

We recommend that this vial be briefly centrifuged prior to opening to bring the contents to the bottom. Please reconstitute protein in deionized sterile water to a concentration of 0.1-1.0 mg/mL. We recommend to add 5-50% of glycerol (final concentration) and aliquot for long-term storage at -20°C/-80°C. Our default final concentration of glycerol is 50%. Customers could use it as reference.

Shelf Life

The shelf life is related to many factors, storage state, buffer ingredients, storage temperature and the stability of the protein itself. Generally, the shelf life of liquid form is 6 months at -20°C/-80°C. The shelf life of lyophilized form is 12 months at -20°C/-80°C.