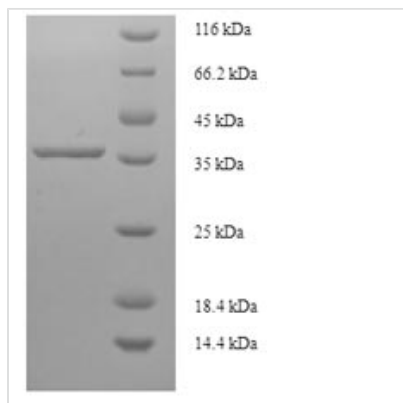




Recombinant Human PDZ and LIM domain protein 3 (PDLIM3)

Product Code	CSB-EP690477HU
Relevance	May play a role in the organization of actin filament arrays within muscle cells.
Abbreviation	Recombinant Human PDLIM3 protein
Storage	The shelf life is related to many factors, storage state, buffer ingredients, storage temperature and the stability of the protein itself. Generally, the shelf life of liquid form is 6 months at -20°C/-80°C. The shelf life of lyophilized form is 12 months at -20°C/-80°C.
Uniprot No.	Q53GG5
Alias	Actinin-associated LIM protein;Alpha-actinin-2-associated LIM protein
Product Type	Recombinant Protein
Immunogen Species	Homo sapiens (Human)
Purity	Greater than 90% as determined by SDS-PAGE.
Sequence	MPQTVILPGPAPWGFRLSGGIDFNQPLVITRITPGSKAAAANLCPGDVILAIIDGF GTESMTHADAQDRIKAAAHQLCLKIDRGETHLWSPQVSEDGKAHPFKINLESE PQEFKPIGTAHNRRRAQPFVAAANIDDKRQVVSASYNSPIGLYSTSNIQDALHGQ LRGLIPSSPQKTGTTLNTSIIFGPNLS
Research Area	Signal Transduction
Source	E.coli
Target Names	PDLIM3
Expression Region	1-189aa
Notes	Repeated freezing and thawing is not recommended. Store working aliquots at 4°C for up to one week.
Tag Info	N-terminal 6xHis-SUMO-tagged
Mol. Weight	36.2kDa
Protein Length	Full Length of Isoform 3
Image	



(Tris-Glycine gel) Discontinuous SDS-PAGE (reduced) with 5% enrichment gel and 15% separation gel.

Reconstitution

We recommend that this vial be briefly centrifuged prior to opening to bring the contents to the bottom. Please reconstitute protein in deionized sterile water to a concentration of 0.1-1.0 mg/mL. We recommend to add 5-50% of glycerol (final concentration) and aliquot for long-term storage at -20°C/-80°C. Our default final concentration of glycerol is 50%. Customers could use it as reference.

Shelf Life

The shelf life is related to many factors, storage state, buffer ingredients, storage temperature and the stability of the protein itself. Generally, the shelf life of liquid form is 6 months at -20°C/-80°C. The shelf life of lyophilized form is 12 months at -20°C/-80°C.