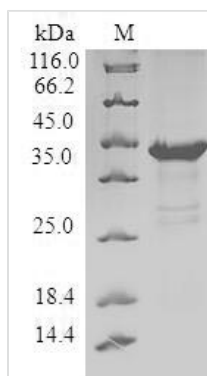




Recombinant Human Pleckstrin homology-like domain family A member 2 (PHLDA2)

Product Code	CSB-EP687493HU
Relevance	Plays a role in regulating placenta growth. May act via its PH domain that competes with other PH domain-containing proteins, thereby preventing their binding to membrane lipids
Abbreviation	Recombinant Human PHLDA2 protein
Storage	The shelf life is related to many factors, storage state, buffer ingredients, storage temperature and the stability of the protein itself. Generally, the shelf life of liquid form is 6 months at -20°C/-80°C. The shelf life of lyophilized form is 12 months at -20°C/-80°C.
Uniprot No.	Q53GA4
Alias	Beckwith-Wiedemann syndrome chromosomal region 1 candidate gene C protein Imprinted in placenta and liver protein Tumor-suppressing STF cDNA 3 protein Tumor-suppressing subchromosomal transferable fragment candidate gene 3 protein p17-Beckwith-Wiedemann region 1 C
Product Type	Recombinant Protein
Immunogen Species	Homo sapiens (Human)
Purity	Greater than 90% as determined by SDS-PAGE.
Sequence	MKSPDEVLRERGELEKRSDSLFQLWKKKRGVLTSDRLSLFPASPRARPKELRFH HSILKVDCVERTGKYVYFTIVTTDHKEIDFRCAGESCWNAIALALIDFQNRRL QDFRSRQERTAPAAPAEDAVAAAAAAPSEPSEPSRPSPQPKPRTP
Research Area	Cell Biology
Source	E.coli
Target Names	PHLDA2
Protein Names	Recommended name: Pleckstrin homology-like domain family A member 2 Alternative name(s): Beckwith-Wiedemann syndrome chromosomal region 1 candidate gene C protein Imprinted in placenta and liver protein Tumor-suppressing STF cDNA 3 protein
Expression Region	1-152aa
Notes	Repeated freezing and thawing is not recommended. Store working aliquots at 4°C for up to one week.
Tag Info	N-terminal GST-tagged
Mol. Weight	44.1kDa
Protein Length	Full Length
Image	



(Tris-Glycine gel) Discontinuous SDS-PAGE (reduced) with 5% enrichment gel and 15% separation gel.

Reconstitution

We recommend that this vial be briefly centrifuged prior to opening to bring the contents to the bottom. Please reconstitute protein in deionized sterile water to a concentration of 0.1-1.0 mg/mL. We recommend to add 5-50% of glycerol (final concentration) and aliquot for long-term storage at -20°C/-80°C. Our default final concentration of glycerol is 50%. Customers could use it as reference.

Shelf Life

The shelf life is related to many factors, storage state, buffer ingredients, storage temperature and the stability of the protein itself. Generally, the shelf life of liquid form is 6 months at -20°C/-80°C. The shelf life of lyophilized form is 12 months at -20°C/-80°C.