



Recombinant Rat Putative phospholipase B-like 2 (Plbd2)

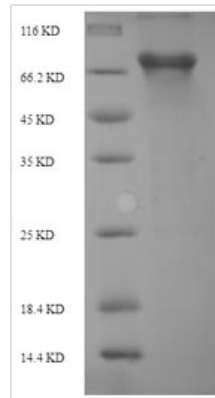
Product Code	CSB-EP683927RA
Relevance	Putative phospholipase.
Abbreviation	Recombinant Rat Plbd2 protein
Storage	The shelf life is related to many factors, storage state, buffer ingredients, storage temperature and the stability of the protein itself. Generally, the shelf life of liquid form is 6 months at -20°C/-80°C. The shelf life of lyophilized form is 12 months at -20°C/-80°C.
Uniprot No.	Q4QQW8
Alias	LAMA-like protein 2; Lamina ancestor homolog 2; Phospholipase B domain-containing protein 2
Product Type	Recombinant Protein
Immunogen Species	Rattus norvegicus (Rat)
Purity	Greater than 90% as determined by SDS-PAGE.
Sequence	GALPTLGPGWRRQNPEPPASRTRSLLLDAAAGQLRLEYGFHPDAVAWANLTN AIRETGWAYLDLGTNGSYNDLQAYAAGVVEASVSEELIYMHWMNTVVNYCG PFEYEVGYCEKLKSFLEANLEWMQREMELSPDSPYWHQVRLTLLQLKGLEDS YEGRLTFPTGRFNKPLGFLLLQISGDLEDLEPALNKTNTKPSVSGSGSCSALIKL LPGSHDLLVAHNTWNSYQNMLRIKKYRLQFREGPQEEYPLIAGNNLIFSSYPG TIFSGDDFYILGSLVTLETTIGNKNPALWKYVQPQGCVLEWIRNIVANRLALD GATWADVFRFRFNSGTYNQWMIVDYKAFIPNGPSPGSRVLTILEQIPGMVVVA DKTAELYKTTYWASYNIPYFESVFNASGLQALVAQYGDWFSYTRNPRAKIFQR DQSLVEDVDTMVRLMRYNDFLHDPLSLCEACSPKPAENAISARSDLNANG SYPFQALRQRAHGGIDVKVTSVALAKYMSMLAASGPTWDQLPPFQWSKSPFH NMLHMGQPDLMWFSPVKVPWD
Research Area	Others
Source	E.coli
Target Names	Plbd2
Protein Names	Recommended name: Putative phospholipase B-like 2 EC= 3.1.1.- Alternative name(s): LAMA-like protein 2 Lamina ancestor homolog 2 Phospholipase B domain-containing protein 2
Expression Region	36-585aa
Notes	Repeated freezing and thawing is not recommended. Store working aliquots at 4°C for up to one week.
Tag Info	N-terminal 6xHis-SUMO-tagged
Mol. Weight	77.9kDa



Protein Length

Full Length of Mature Protein

Image



(Tris-Glycine gel) Discontinuous SDS-PAGE (reduced) with 5% enrichment gel and 15% separation gel.

Reconstitution

We recommend that this vial be briefly centrifuged prior to opening to bring the contents to the bottom. Please reconstitute protein in deionized sterile water to a concentration of 0.1-1.0 mg/mL. We recommend to add 5-50% of glycerol (final concentration) and aliquot for long-term storage at -20°C/-80°C. Our default final concentration of glycerol is 50%. Customers could use it as reference.

Shelf Life

The shelf life is related to many factors, storage state, buffer ingredients, storage temperature and the stability of the protein itself. Generally, the shelf life of liquid form is 6 months at -20°C/-80°C. The shelf life of lyophilized form is 12 months at -20°C/-80°C.