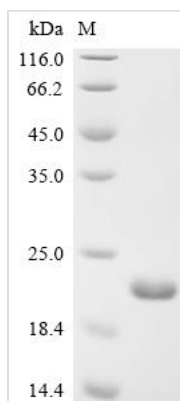




Recombinant Salmonella typhimurium SPI-1 type 3 secretion system translocon protein SctE (sctE1), partial

Product Code	CSB-EP681910SXB1e1
Abbreviation	Recombinant Salmonella typhimurium sctE1 protein, partial
Storage	The shelf life is related to many factors, storage state, buffer ingredients, storage temperature and the stability of the protein itself. Generally, the shelf life of liquid form is 6 months at -20°C/-80°C. The shelf life of lyophilized form is 12 months at -20°C/-80°C.
Uniprot No.	Q56019
Form	Liquid or Lyophilized powder
Storage Buffer	If the delivery form is liquid, the default storage buffer is Tris/PBS-based buffer, 5%-50% glycerol. If the delivery form is lyophilized powder, the buffer before lyophilization is Tris/PBS-based buffer, 6% Trehalose.
Product Type	Recombinant Salmonella typhimurium SPI-1 type 3 secretion system translocon protein SctE (sctE1), partial
Immunogen Species	Salmonella typhimurium (strain LT2 / SGSC1412 / ATCC 700720)
Sensitivity	Not Test
Purity	Greater than 95% as determined by SDS-PAGE.
Sequence	SEGQLTLLLGKLM TLLGDVSL SQLESRLAVWQAMIESQKEMGIQVSKEFQTAL GEAQEATDLYEASIKKTD TAKSVYDAATKKLTQAQNK LQSLDPADPGYAQAEA AVEQAGKEATEAKEALDKATDATVKAGTDAKAKAEKADNILTKFQGTANAA
Research Area	Others
Source	E.coli
Target Names	sctE1
Expression Region	81-237aa
Notes	Repeated freezing and thawing is not recommended. Store working aliquots at 4°C for up to one week.
Tag Info	Tag-Free
Mol. Weight	17.3
Protein Length	Partial
Image	



(Tris-Glycine gel) Discontinuous SDS-PAGE (reduced) with 5% enrichment gel and 15% separation gel.

Reconstitution

We recommend that this vial be briefly centrifuged prior to opening to bring the contents to the bottom. Please reconstitute protein in deionized sterile water to a concentration of 0.1-1.0 mg/mL. We recommend to add 5-50% of glycerol (final concentration) and aliquot for long-term storage at -20°C/-80°C. Our default final concentration of glycerol is 50%. Customers could use it as reference.

Shelf Life

The shelf life is related to many factors, storage state, buffer ingredients, storage temperature and the stability of the protein itself. Generally, the shelf life of liquid form is 6 months at -20°C/-80°C. The shelf life of lyophilized form is 12 months at -20°C/-80°C.