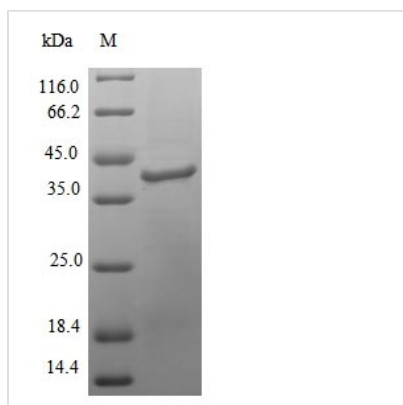


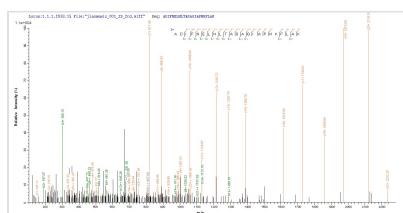


# Recombinant Colwellia psychrerythraea DNA polymerase IV (dinB)

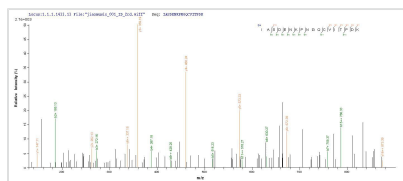
<b>Product Code</b>	CSB-EP676401CBAB
<b>Relevance</b>	Poorly processive, error-prone DNA polymerase involved in untargeted mutagenesis. Copies undamaged DNA at stalled replication forks, which arise in vivo from mismatched or misaligned primer ends. These misaligned primers can be extended by PolIV. Exhibits no 3'-5' exonuclease (proofreading) activity. May be involved in translesional synthesis, in conjunction with the beta clamp from PolIII.
<b>Abbreviation</b>	Recombinant Colwellia psychrerythraea dinB protein
<b>Storage</b>	The shelf life is related to many factors, storage state, buffer ingredients, storage temperature and the stability of the protein itself. Generally, the shelf life of liquid form is 6 months at -20°C/-80°C. The shelf life of lyophilized form is 12 months at -20°C/-80°C.
<b>Uniprot No.</b>	Q487H6
<b>Product Type</b>	Recombinant Protein
<b>Immunogen Species</b>	Colwellia psychrerythraea (strain 34H / ATCC BAA-681?)(Vibrio psychroerythus)
<b>Purity</b>	Greater than 90% as determined by SDS-PAGE.
<b>Sequence</b>	MGNQKKIIHIDMDCFYAAIEMRDFPEYQNIPLAVGGDGPRSVLCTSNYQARQF GVRSAIPAIAKAKQLCPHLKIVHGRMDVYKETSKNIREIFSRYTDLIEPLSLDEAY LDVTDATMCQGSATLIAERIRADIFNELNLTASAGIAPNKFLAKIASDENKPNGQ CVITPDKVANFVEQLSLKKIPGIGPKTFEKLNRHGYVTCADVRQSNIRALQNIVG KFANSLYLKSHGVDNRDLEVSRQRKSLAIETTLAHDISTQDECKLVIDSLYQKLL TRLAPHSNREIIRQGVKLKFTDFNQTTVETQSNECQQALFISLLSKAYSRSNKR GVRLVGLTLGFADSPGESQQLSLSL
<b>Research Area</b>	others
<b>Source</b>	E.coli
<b>Target Names</b>	dinB
<b>Protein Names</b>	Recommended name: DNA polymerase IV Short name= Pol IV EC= 2.7.7.7
<b>Expression Region</b>	1-352aa
<b>Notes</b>	Repeated freezing and thawing is not recommended. Store working aliquots at 4°C for up to one week.
<b>Tag Info</b>	N-terminal 6xHis-tagged
<b>Mol. Weight</b>	43.3kDa
<b>Protein Length</b>	Full Length
<b>Image</b>	



(Tris-Glycine gel) Discontinuous SDS-PAGE (reduced) with 5% enrichment gel and 15% separation gel.



Based on the SEQUEST from database of E.coli host and target protein, the LC-MS/MS Analysis result of CSB-EP676401CBAB could indicate that this peptide derived from E.coli-expressed Colwellia psychrerythraea (strain 34H / ATCC BAA-681) (*Vibrio psychroerythrus*) dinB.



Based on the SEQUEST from database of E.coli host and target protein, the LC-MS/MS Analysis result of CSB-EP676401CBAB could indicate that this peptide derived from E.coli-expressed Colwellia psychrerythraea (strain 34H / ATCC BAA-681) (*Vibrio psychroerythrus*) dinB.

## Reconstitution

We recommend that this vial be briefly centrifuged prior to opening to bring the contents to the bottom. Please reconstitute protein in deionized sterile water to a concentration of 0.1-1.0 mg/mL. We recommend to add 5-50% of glycerol (final concentration) and aliquot for long-term storage at -20°C/-80°C. Our default final concentration of glycerol is 50%. Customers could use it as reference.

## Shelf Life

The shelf life is related to many factors, storage state, buffer ingredients, storage temperature and the stability of the protein itself. Generally, the shelf life of liquid form is 6 months at -20°C/-80°C. The shelf life of lyophilized form is 12 months at -20°C/-80°C.