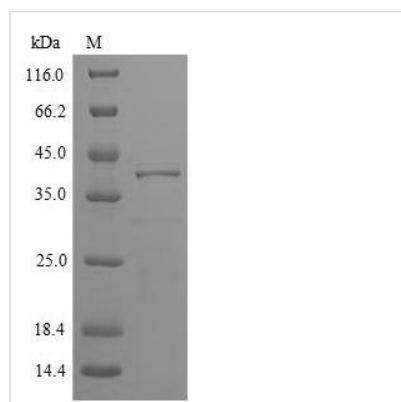




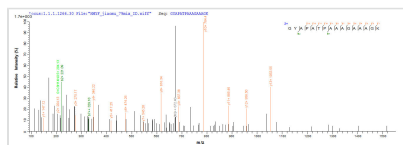
# Recombinant Phleum pratense Pollen allergen Phl p 5b, partial

<b>Product Code</b>	CSB-EP671435EUQ
<b>Relevance</b>	Has ribonuclease activity. May be involved in host-pathogen interactions.
<b>Abbreviation</b>	Recombinant Phleum pratense Pollen allergen Phl p 5b protein, partial
<b>Storage</b>	The shelf life is related to many factors, storage state, buffer ingredients, storage temperature and the stability of the protein itself. Generally, the shelf life of liquid form is 6 months at -20°C/-80°C. The shelf life of lyophilized form is 12 months at -20°C/-80°C.
<b>Uniprot No.</b>	Q40963
<b>Product Type</b>	Recombinant Proteins
<b>Immunogen Species</b>	Phleum pratense (Common timothy)
<b>Purity</b>	Greater than 90% as determined by SDS-PAGE.
<b>Sequence</b>	ADAGYAPATPAAAGAAAGKATTEEQKLIEDINVGFKAAVAAAASVPAADKFKTF EAAFTSSSKAAAAKAPGLVPKLDAAYSVAYKAAVGATPEAKFDSFVASLTEAL RVIAGALEVHAVKPVTEEPGMAKIPAGELQIIDKIDAAFKVAATAAATAPADDKF TVFEAAFNKAIKESTGGAYDTYKCIPSLEAAVKQAYAATVAAAPQVKYAVFEAA LTKAITAMSEVQKVSQPATGAATVAAGAATTAAGAASGAATVAAGGYKV
<b>Research Area</b>	Others
<b>Source</b>	E.coli
<b>Target Names</b>	N/A
<b>Expression Region</b>	20-284aa
<b>Notes</b>	Repeated freezing and thawing is not recommended. Store working aliquots at 4°C for up to one week.
<b>Tag Info</b>	N-terminal 6xHis-SUMO-tagged
<b>Mol. Weight</b>	42.1kDa
<b>Protein Length</b>	partial

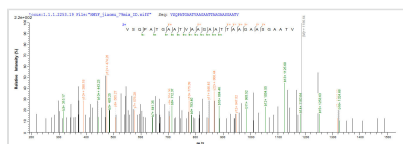
## Image



(Tris-Glycine gel) Discontinuous SDS-PAGE (reduced) with 5% enrichment gel and 15% separation gel.



Based on the SEQUEST from database of E.coli host and target protein, the LC-MS/MS Analysis result of CSB-EP671435EUQ could indicate that this peptide derived from E.coli-expressed Phleum pratense (Common timothy) Phl p 5b.



Based on the SEQUEST from database of E.coli host and target protein, the LC-MS/MS Analysis result of CSB-EP671435EUQ could indicate that this peptide derived from E.coli-expressed Phleum pratense (Common timothy) Phl p 5b.

## Shelf Life

The shelf life is related to many factors, storage state, buffer ingredients, storage temperature and the stability of the protein itself.

Generally, the shelf life of liquid form is 6 months at -20°C/-80°C. The shelf life of lyophilized form is 12 months at -20°C/-80°C.