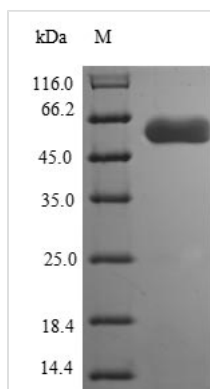




Recombinant Campylobacter jejuni Flagellin B (flaB)

Product Code	CSB-EP670474CBV(A4)
Relevance	Flagellin is the subunit protein which polymerizes to form the filaments of bacterial flagella.
Abbreviation	Recombinant Campylobacter jejuni flaB protein
Storage	The shelf life is related to many factors, storage state, buffer ingredients, storage temperature and the stability of the protein itself. Generally, the shelf life of liquid form is 6 months at -20°C/-80°C. The shelf life of lyophilized form is 12 months at -20°C/-80°C.
Uniprot No.	Q46114
Product Type	Recombinant Protein
Immunogen Species	Campylobacter jejuni
Purity	Greater than 85% as determined by SDS-PAGE.
Sequence	GFRINTNIGALNAHANSVVNARELDKSL SRLSSGLRINSAADDASGMAIADSLR SQAATLGQAINNGNDAIGILQTADKAMDEQLKILDTIKTKATQAAQDGGQSLKTR TMLQADINRLMEELDNIANTTSFNGKQLLSGNFINQEFQIGASSNQTIKATIGAT QSSKIGLTRFETGSRISVGGEVQFTLKNYNGIDDFKFQKVVISTSVGTGLGALA EEINKSADQTGVRATFTVETRGMGAVRAGATSEDFAINGVKIGQIEYKGDGAN GALVSAINSVKDTTGVEASIDENGKLLTSREGRGKIEGNIGRGAFINPNMLEN YGRSLVKNDGKDILISGTNLSAIGFGTGNMISQASVSLRESKGQIDANVADAM GFNSANKGNILGGYSSVSAYMSSTGSGFSSGSGFSVGSGKNYSTGFANTIAIS AASQLSAVYNVSAGSGFSSGSNLSQFATMKTSAGNTLGVKDETAGVTTLKGA MAVMDIAETAITNLDQIRADIGSVQNQLQVTINNITVTQVNVKAAESTIRDVDFA AESANFSKYNILAQSGSYAMSQANAVQQNVLKLLQ
Source	E.coli
Target Names	flaB
Protein Names	Recommended name: Flagellin B
Expression Region	2-575aa
Notes	Repeated freezing and thawing is not recommended. Store working aliquots at 4°C for up to one week.
Tag Info	C-terminal 6xHis-tagged
Mol. Weight	61.6 kDa
Protein Length	Full Length of Mature Protein
Image	



(Tris-Glycine gel) Discontinuous SDS-PAGE (reduced) with 5% enrichment gel and 15% separation gel.

Reconstitution

We recommend that this vial be briefly centrifuged prior to opening to bring the contents to the bottom. Please reconstitute protein in deionized sterile water to a concentration of 0.1-1.0 mg/mL. We recommend to add 5-50% of glycerol (final concentration) and aliquot for long-term storage at -20°C/-80°C. Our default final concentration of glycerol is 50%. Customers could use it as reference.

Shelf Life

The shelf life is related to many factors, storage state, buffer ingredients, storage temperature and the stability of the protein itself. Generally, the shelf life of liquid form is 6 months at -20°C/-80°C. The shelf life of lyophilized form is 12 months at -20°C/-80°C.