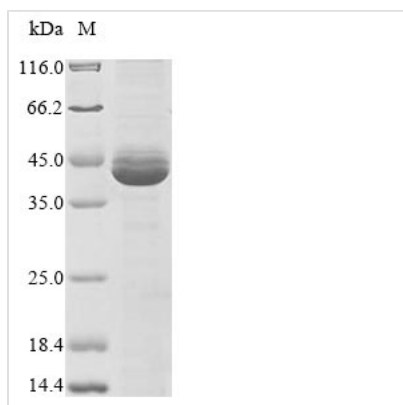




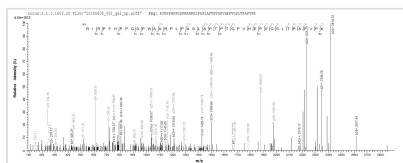
# Recombinant Epstein-Barr virus Replication and transcription activator (BRLF1), partial

<b>Product Code</b>	CSB-EP662061EFC
<b>Abbreviation</b>	Recombinant Epstein-Barr virus BRLF1 protein, partial
<b>Storage</b>	The shelf life is related to many factors, storage state, buffer ingredients, storage temperature and the stability of the protein itself. Generally, the shelf life of liquid form is 6 months at -20°C/-80°C. The shelf life of lyophilized form is 12 months at -20°C/-80°C.
<b>Uniprot No.</b>	Q3KSS7
<b>Product Type</b>	Recombinant Protein
<b>Immunogen Species</b>	Epstein-Barr virus (strain GD1) (HHV-4) (Human herpesvirus 4)
<b>Purity</b>	Greater than 85% as determined by SDS-PAGE.
<b>Sequence</b>	PRLRAPKSRRTSRPNRGQTPCPSNAEEPEQPWIAAVHQESDERPIFPHPSKP TFLPPVKRKKGLRDSREGMFLPKPEAGSAISDVFEQREVCQPKRIRPFHPPGS PWANRPLPASLAPTPTGPVHEPVGSLTPAPVPKPLDPAPAVTPEASHLLEDPD EETSQAVKALREMADTVIPQKEEAICGQMDLNHPPPRGHLDELTTTLESMT DLNLDSPLTPELNEILDFTLNDECLLHAMHISTGLSIFDTSLF
<b>Research Area</b>	Others
<b>Source</b>	E.coli
<b>Target Names</b>	BRLF1
<b>Protein Names</b>	Recommended name: Replication and transcription activator Short name= Rta Alternative name(s): Immediate-early protein Rta
<b>Expression Region</b>	352-605aa
<b>Notes</b>	Repeated freezing and thawing is not recommended. Store working aliquots at 4°C for up to one week.
<b>Tag Info</b>	N-terminal 10xHis-tagged and C-terminal Myc-tagged
<b>Mol. Weight</b>	34.9 kDa
<b>Protein Length</b>	Partial

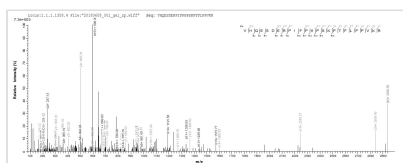
**Image**



(Tris-Glycine gel) Discontinuous SDS-PAGE (reduced) with 5% enrichment gel and 15% separation gel.



Based on the SEQUEST from database of E.coli host and target protein, the LC-MS/MS Analysis result of CSB-EP662061EFC could indicate that this peptide derived from E.coli-expressed Epstein-Barr virus (strain GD1) (HHV-4) (Human herpesvirus 4) BRLF1.



Based on the SEQUEST from database of E.coli host and target protein, the LC-MS/MS Analysis result of CSB-EP662061EFC could indicate that this peptide derived from E.coli-expressed Epstein-Barr virus (strain GD1) (HHV-4) (Human herpesvirus 4) BRLF1.

## Reconstitution

We recommend that this vial be briefly centrifuged prior to opening to bring the contents to the bottom. Please reconstitute protein in deionized sterile water to a concentration of 0.1-1.0 mg/mL. We recommend to add 5-50% of glycerol (final concentration) and aliquot for long-term storage at -20°C/-80°C. Our default final concentration of glycerol is 50%. Customers could use it as reference.

## Shelf Life

The shelf life is related to many factors, storage state, buffer ingredients, storage temperature and the stability of the protein itself. Generally, the shelf life of liquid form is 6 months at -20°C/-80°C. The shelf life of lyophilized form is 12 months at -20°C/-80°C.