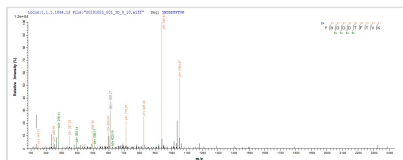




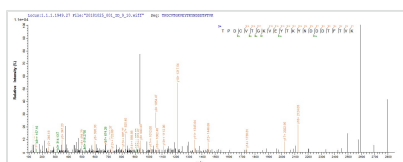
Recombinant Shigella dysenteriae serotype 1 Shiga toxin subunit B (stxB)

Product Code	CSB-EP653424SGF
Abbreviation	Recombinant Shigella dysenteriae serotype 1 stxB protein
Storage	The shelf life is related to many factors, storage state, buffer ingredients, storage temperature and the stability of the protein itself. Generally, the shelf life of liquid form is 6 months at -20°C/-80°C. The shelf life of lyophilized form is 12 months at -20°C/-80°C.
Uniprot No.	Q32GM0
Storage Buffer	Tris-based buffer,50% glycerol
Product Type	Recombinant Protein
Immunogen Species	Shigella dysenteriae serotype 1 (strain Sd197)
Purity	Greater than 85% as determined by SDS-PAGE.
Sequence	TPDCVTGKVEYTKYNDDDTFTVKVGDKEFTNRWNLQSLLLSAQITGMTVTIKT NACHNGGGFSEVIFR
Research Area	Signal Transduction
Source	E.coli
Target Names	stxB
Protein Names	Recommended name: Shiga toxin subunit B
Expression Region	21-89aa
Notes	Repeated freezing and thawing is not recommended. Store working aliquots at 4°C for up to one week.
Tag Info	N-terminal 10xHis-tagged and C-terminal Myc-tagged
Mol. Weight	15.1 kDa
Protein Length	Full Length of Mature Protein

Image



Based on the SEQUEST from database of E.coli host and target protein, the LC-MS/MS Analysis result of CSB-EP653424SGF could indicate that this peptide derived from E.coli-expressed Shigella dysenteriae serotype 1 (strain Sd197) stxB.



Based on the SEQUEST from database of E.coli host and target protein, the LC-MS/MS Analysis result of CSB-EP653424SGF could indicate that this peptide derived from E.coli-expressed Shigella dysenteriae serotype 1 (strain Sd197) stxB.



Reconstitution

We recommend that this vial be briefly centrifuged prior to opening to bring the contents to the bottom. Please reconstitute protein in deionized sterile water to a concentration of 0.1-1.0 mg/mL. We recommend to add 5-50% of glycerol (final concentration) and aliquot for long-term storage at -20°C/-80°C. Our default final concentration of glycerol is 50%. Customers could use it as reference.

Shelf Life

The shelf life is related to many factors, storage state, buffer ingredients, storage temperature and the stability of the protein itself. Generally, the shelf life of liquid form is 6 months at -20°C/-80°C. The shelf life of lyophilized form is 12 months at -20°C/-80°C.