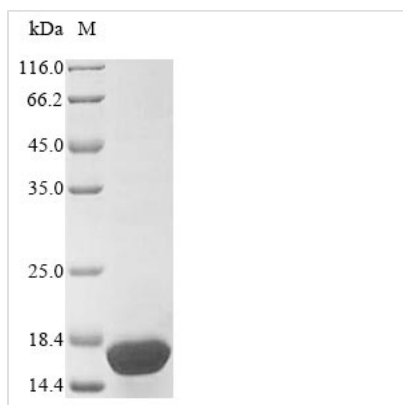




Recombinant Macaca fascicularis Gamma-synuclein (SNCG)

Product Code	CSB-EP646889MOV
Relevance	Plays a role in neurofilament network integrity. May be involved in modulating axonal architecture during development and in the adult. In vitro, increases the susceptibility of neurofilament-H to calcium-dependent proteases (By similarity). May also function in modulating the keratin network in skin. Activates the MAPK and Elk-1 signal transduction pathway
Abbreviation	Recombinant Cynomolgus monkey SNCG protein
Storage	The shelf life is related to many factors, storage state, buffer ingredients, storage temperature and the stability of the protein itself. Generally, the shelf life of liquid form is 6 months at -20°C/-80°C. The shelf life of lyophilized form is 12 months at -20°C/-80°C.
Uniprot No.	Q2PFW6
Product Type	Recombinant Protein
Immunogen Species	Macaca fascicularis (Crab-eating macaque) (Cynomolgus monkey)
Purity	Greater than 85% as determined by SDS-PAGE.
Sequence	MDVFKKGFSIAKEGVVGAVEKTKQGVTEAAEKTKEGVMYVGTKTKENVVHSV TSVAEKTKEQANAVSEAVVSSVNTVAAKTVEEAENIAVTSGVVRKEDLKPSAP QQEGEAAKEKEEVAEEAQSGGD
Research Area	Neuroscience
Source	E.coli
Target Names	SNCG
Protein Names	Recommended name: Gamma-synuclein
Expression Region	1-127aa
Notes	Repeated freezing and thawing is not recommended. Store working aliquots at 4°C for up to one week.
Tag Info	Tag-Free
Mol. Weight	13.3 kDa
Protein Length	Full Length
Image	



(Tris-Glycine gel) Discontinuous SDS-PAGE (reduced) with 5% enrichment gel and 15% separation gel.

Description

In the general process of expressing the recombinant *Macaca fascicularis* (Crab-eating macaque) SNCG protein, a plasmid encoding the *Macaca fascicularis* (Crab-eating macaque) SNCG protein (1-127aa) is constructed first. The plasmid is transferred into *e.coli* cells, from which cells containing the plasmid are selected and cultured to express the protein. The recombinant *Macaca fascicularis* (Crab-eating macaque) SNCG protein undergoes affinity purification and SDS-PAGE analysis. This protein surpasses a purity level of 85%.

Reconstitution

We recommend that this vial be briefly centrifuged prior to opening to bring the contents to the bottom. Please reconstitute protein in deionized sterile water to a concentration of 0.1-1.0 mg/mL. We recommend to add 5-50% of glycerol (final concentration) and aliquot for long-term storage at -20°C/-80°C. Our default final concentration of glycerol is 50%. Customers could use it as reference.

Shelf Life

The shelf life is related to many factors, storage state, buffer ingredients, storage temperature and the stability of the protein itself. Generally, the shelf life of liquid form is 6 months at -20°C/-80°C. The shelf life of lyophilized form is 12 months at -20°C/-80°C.