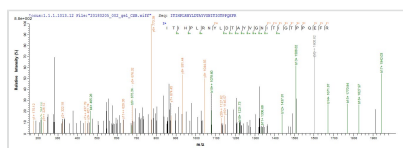




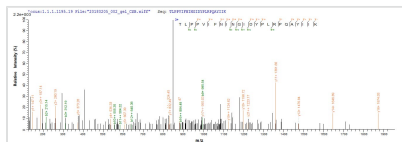
# Recombinant Bovine Pregnancy-associated glycoprotein 2 (PAG2)

<b>Product Code</b>	CSB-EP637747BO
<b>Abbreviation</b>	Recombinant Bovine PAG2 protein
<b>Storage</b>	The shelf life is related to many factors, storage state, buffer ingredients, storage temperature and the stability of the protein itself. Generally, the shelf life of liquid form is 6 months at -20°C/-80°C. The shelf life of lyophilized form is 12 months at -20°C/-80°C.
<b>Uniprot No.</b>	Q28057
<b>Product Type</b>	Recombinant Protein
<b>Immunogen Species</b>	Bos taurus (Bovine)
<b>Purity</b>	Greater than 85% as determined by SDS-PAGE.
<b>Sequence</b>	KKMKTLETLREKNLLNFFLEEQAYRLSKNDSKITHPLRNYLDTAYVGNITIGT PPQEFRVVFDTGSANLWVPCITCTSPACYTHKTFNPQNSSSFREVGSPITIFYG SGIIQGFLGSDTVRIGNLVSPSEQSFGLSLEEYGFDSLPPFDGILGLAFAPAMGIETI PIFDNLWSHGAFSEPVFAFYLNNTNKPEGSVVMFGGVDHRYYKGELNWIPVSQ TSHWQISMNNISMNGTVTACSCGCEALLDTGTSMIYGPTKLVTNIHKLMNARL ENSEYVVS CDAVKTLPPVIFNNGIDYPLRPQAYIIKIQNSCRSVFQGGTENS SLNTWILGDI FLRQYFSVFDRKNRRIGLAPAV
<b>Research Area</b>	Signal Transduction
<b>Source</b>	E.coli
<b>Target Names</b>	PAG2
<b>Protein Names</b>	Recommended name: Pregnancy-associated glycoprotein 2 Short name= PAG 2 EC= 3.4.23.-
<b>Expression Region</b>	22-376aa
<b>Notes</b>	Repeated freezing and thawing is not recommended. Store working aliquots at 4°C for up to one week.
<b>Tag Info</b>	N-terminal 6xHis-tagged
<b>Mol. Weight</b>	43.6
<b>Protein Length</b>	Full Length of Mature Protein

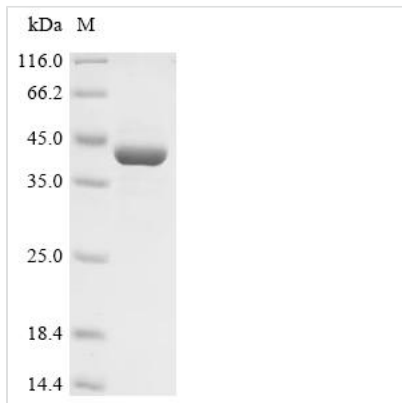
## Image



Based on the SEQUEST from database of E.coli host and target protein, the LC-MS/MS Analysis result of CSB-EP637747BO could indicate that this peptide derived from E.coli-expressed Bos taurus (Bovine) PAG2.



Based on the SEQUEST from database of E.coli host and target protein, the LC-MS/MS Analysis result of CSB-EP637747BO could indicate that this peptide derived from E.coli-expressed Bos taurus (Bovine) PAG2.



(Tris-Glycine gel) Discontinuous SDS-PAGE (reduced) with 5% enrichment gel and 15% separation gel.

## Reconstitution

We recommend that this vial be briefly centrifuged prior to opening to bring the contents to the bottom. Please reconstitute protein in deionized sterile water to a concentration of 0.1-1.0 mg/mL. We recommend to add 5-50% of glycerol (final concentration) and aliquot for long-term storage at -20°C/-80°C. Our default final concentration of glycerol is 50%. Customers could use it as reference.

## Shelf Life

The shelf life is related to many factors, storage state, buffer ingredients, storage temperature and the stability of the protein itself. Generally, the shelf life of liquid form is 6 months at -20°C/-80°C. The shelf life of lyophilized form is 12 months at -20°C/-80°C.